

**REGULAR MEETING
OF
CACHUMA OPERATION AND MAINTENANCE BOARD**

**3301 Laurel Canyon Road
Santa Barbara, CA 93105**

Monday, April 25, 2011

2:00 p.m.

AGENDA

- 1. COMB CALL TO ORDER, ROLL CALL** (COMB Board of Directors.)
- 2. PUBLIC COMMENT** (Public may address the Board on any subject matter not on the agenda and within the Board's jurisdiction. See "Notice to the Public" below.)
- 3. [CLOSED SESSION] CONFERENCE WITH BOARD REGARDING GENERAL MANAGER'S RETIREMENT MATTERS, PURSUANT TO GOVERNMENT CODE SECTION 54957**
- 4. CONSENT AGENDA** (For Board action by vote on one motion unless member requests separate consideration.)
 - a. Minutes
 - March 28, 2011 Regular Board Meeting
 - b. Investment of Funds
 - Financial Reports
 - Investment Reports
 - c. Payment of Claims
- 5. REPORTS FROM BOARD COMMITTEES**
 - a. **Verbal:** General Manager Search and Transition Ad Hoc Committee
- 6. REORGANIZATION ISSUES**
 - a. **Verbal:** Report on Reorganization Ad Hoc Committee Meeting April 15, 2011
 - Status of Draft Amendment to COMB JPA
 - Status of Draft Agreement Between ID1, CCRB and COMB for Implementation of Certain Sections of the 2001 Fisheries MOU
 - b. Revised Timeline to Complete Reorganization
- 7. SANTA YNEZ RIVER RIVERWARE MODEL PEER REVIEW**
- 8. FISHERIES DIVISION ACTIVITIES**
 - a. **Staff Presentation:** Fish Scale Analysis (*10 minutes*)

- b. **Verbal:** Quiota Creek Tributary Projects Updates
 - c. Quiota Creek Projects Meeting with County Public Works Director, April 11, 2011
 - d. Preliminary FY 2011-12 Cachuma Betterment Fund Meeting with County, April 11, 2011
 - e. Fisheries Program Report
- 9. MODIFIED UPPER REACH RELIABILITY PROJECT**
- a. State Water Board's Informal Acceptance of Modified Upper Reach Reliability Project to Replace the SCC 2nd Pipeline Project for Use of Prop 50 Grant and Staff Schedule
 - b. Revised Modified Upper Reach Reliability Project ("Plan B")
 - c. AECOM's Proposed Scope of Work
 - d. Project Schedule
 - e. Potential Bid Options for Modified Upper Reach Reliability Project
- 10. OPERATIONS DIVISION ACTIVITIES**
- a. Lauro Detention Basin Enlargement - 2010 Annual Monitoring Report
 - b. Operations Report
- 11. REPORTS FROM THE MANAGER**
- a. Cachuma Water Reports
 - b. Cachuma Reservoir Current Conditions
 - c. Lake Cachuma 2011 Spill
 - d. Association of Water Agencies of Ventura County – The 19th Annual Water Symposium, April 21, 2011
- 12. DIRECTORS' REQUEST FOR AGENDA ITEMS FOR NEXT MEETING**
- 13. MEETING SCHEDULE**
- COMB Administration Committee Meeting, May 3, 2011 2:00 P.M., COMB Office
 - COMB Board Meeting, May 23, 2011 2:00 P.M., COMB Office
 - Board Packages Available on COMB Website
www.cachuma-board.org
- 14. COMB ADJOURNMENT**

NOTICE TO PUBLIC

Public Comment: Any member of the public may address the Board on any subject within the jurisdiction of the Board that is not scheduled for a public hearing before the Board. The total time for this item will be limited by the President of the Board. If you wish to address the Board under this item, please complete and deliver to the Secretary of the Board before the meeting is convened, a "Request to Speak" forms including a description of the subject you wish to address.

Americans with Disabilities Act: In compliance with the Americans with Disabilities Act, if you need special assistance to participate in this meeting, please contact the Cachuma Operation and Maintenance Board office at (805) 687-4011 at least 48 hours prior to the meeting to enable the Board to make reasonable arrangements.

[This Agenda was Posted at 3301 Laurel Canyon Road, Santa Barbara, CA
at Santa Barbara City Hall, Santa Barbara, CA and at Member District Offices and Noticed and Delivered in Accordance with
Section 54954.1 and .2 of the Government Code.]

**MINUTES OF A REGULAR MEETING
Of the
CACHUMA OPERATION & MAINTENANCE BOARD**

**Held at the
Cachuma Operation & Maintenance Board Office
3301 Laurel Canyon Road, Santa Barbara, CA
Monday, March 28, 2011**

1. Call to Order, Roll Call

The meeting was called to order at 2:00 p.m. by President Lauren Hanson who chaired the meeting. Those in attendance were:

Directors present:

Lauren Hanson	Goleta Water District
Bob Lieberknecht	Carpinteria Valley Water District
Doug Morgan	Montecito Water District
Dale Francisco	City of Santa Barbara
Dennis Beebe	SYR Water Conservation District, ID No. 1

Others present:

Kate Rees	Tony Trembley
Jim Colton	Adelle Capponi
John McInnes	Dave Ault
Sonja Fernandez	Bill Ferguson
Ruth Snodgrass	Daniel Brooks
Jim Blois	Beth Ford
Phil Walker	Harlan Burchardi
Tim Robinson	Michael O'Brien (phone)

2. Public Comment

Phil Walker complimented the Board and COMB staff on the public meeting held regarding the Lauro Dam Early Warning System.

3. [Closed Session] Conference With Legal Counsel Regarding Anticipated Litigation, Pursuant to Government Code Section 54956.9(c) (one case)

The Board went into closed session at 2:05 p.m. and came out of closed session at 2:16 p.m. There was no reportable action out of closed session.

4. Consent Agenda

a. Minutes:
February 28, 2011 Regular Board Meeting

b. Investment Funds
Financial Reports

ITEM # 4 a
PAGE 1

Investment Report

c. Payment of Claims

Director Beebe moved to approve the consent agenda as presented, seconded by Director Francisco, passed 7/0/0.

5. Resolution No. 521 for David Ault Upon His Retirement From COMB.

President Hanson presented Resolution No. 521 to David Ault upon his retirement from COMB and thanked him for all he has done during his fifteen years with COMB. The Board approved Resolution No. 521 by unanimous acclamation.

6. Reports From Board Committees

a. Administration Committee

President Hanson reported that the Administration Committee had met and discussed the Modified Upper Reach Project, and also continued the discussion on salaries and benefits for COMB employees. Both topics will have further discussion at future meetings.

b. General Manager Search and Transition Ad Hoc Committee

President Hanson reported that 35 applications for the General Manager position had been received, and that the committee would be meeting April 4th to review the applications. She expected that 3 to 5 candidates would be recommended to be interviewed by the full Board.

7. Reorganization Issues

a. Preparation of Draft Agreement Among CCRB, ID#1 and COMB Related to 2001 Fish MOU by Chip Wullbrandt, Price Postel & Parma LLP, to be Carried Out by CCRB Rather Than COMB

Ms. Rees informed the Board that after discussion with COMB's General Counsel, it would be more appropriate for Mr. Wullbrandt to be paid for drafting the implementation agreement by CCRB rather than COMB, as he has been representing CCRB throughout the reorganization discussions. The Board agreed.

b. Draft Agreement Related to the 2001 MOU to Support Implementation of the Cachuma Biological Opinion and Lower Santa Ynez River Fish Management Plan Among CCRB, ID#1 and COMB

Ms. Rees included in the board packet the draft agreement related to COMB implementing CCRB's and ID#1's responsibilities in the 2001 Fish MOU for information. She reported that the Member Unit General Managers were reviewing the Draft Agreement, and requested that any comments the Directors might have, should be directed to their individual General Managers. The Final Implementation Agreement will come back for Board approval at the April 25 or May 24, 2011 Board meeting.

c. Draft Amendment to COMB JPA

Ms. Rees included in the board packet a draft Amendment to the COMB Joint Powers Agreement per the terms of the reorganization concept structure. The Amendment must be approved by all member unit Boards or Council for it to go into effect. It will not require COMB's approval. Ms. Rees will set up a conference call with the Reorganization Committee to discuss comments on the draft Amendment to the JPA.

d. Revised Timeline to Complete Reorganization

Ms. Rees made some corrections to the projected timeline included in the board packet. She reported that staff would prepare a draft Renewal Fund/Trust Fund (MCA 27) 5-Year Plan and 2012 Annual Plan during May. COMB will consider approval of both Plans at its May 23rd Board meeting. Per the terms of the reorganization, approval of the 5-Year Plan will require a unanimous vote; the Annual Plan will require a majority vote as part of approving the COMB FY 11-12 Budget.

8. Consideration of Alternate Upper Reach Reliability Project

a. Revised Modified Upper Reach Reliability Project: Components, Cost Estimates, and Schedule

Ms. Rees highlighted the information that was included in the board packet. AECOM provided a cost estimate for the Modified Upper Reach Reliability Project. They had also prepared a preliminary Scope of Work outline for the entire project. The project will be carried out over two fiscal years FY 2011-12 and FY 2012/13. A preliminary project schedule was also included. The Board requested that the SOW reflect "Plan B", and that the projects tasks and components be more closely tied to the project schedule and budget so that they could be identified more easily. Staff will work with AECOM on the revisions and present a revised SOW, project components, and cost estimate at the April Board meeting.

b. Report on South Coast Member Units' Support of Funding the Modified Upper Reach Reliability Project

President Hanson reported that all of the south coast Member Units had agreed to financially support the Modified Upper Reach Reliability Project per their normal Cachuma entitlement shares.

c. Consider Approval of Draft Letter to SWRCB Requesting Acceptance of Modified Upper Reach Reliability Project to Replace the SCC 2nd Pipeline Project for Use of Prop 50 Grant

Ms. Rees included in the board packet a draft letter to the SWRCB requesting modification to COMB's South Coast Conduit Upper Reach Reliability Project (Component 1 – SCC 2nd Pipeline Project) included in the Proposition 50 Master Contract for Santa Barbara County. COMB is requesting that the Modified Upper Reach Reliability Project be substituted for the SCC 2nd Pipeline Project.

Matt Naftaly, Santa Barbara County Water Agency Manager, also wrote a letter to the SWRCB in support of COMB's revised project, and emphasized that it would still provide regional benefit and meet the goals of Prop 50 and

Santa Barbara's IRWMP. His draft letter was also included in the board packet.

Director Hanson moved to; 1) confirm that the 2nd Pipeline Project has been deferred in favor of the Modified Upper Reach Reliability Project, 2) to authorize staff to proceed with the project planning; and 3) to authorize that the COMB letter be sent to the State Water Resources Control Board requesting approval of COMB's substitution of the 2nd Pipeline Project for the Modified Upper Reach Reliability Project for use of the Prop 50 grant, seconded by Director Francisco, Director Hanson modified her motion to "Modified Upper Reach Reliability Project, Plan B," Director Francisco accepted the modification of the motion to his second, passed 6/0/1, Director Beebe abstained.

d. Consider Rejection of Blois Construction, Inc. Bid for SCC Upper Reach Reliability Project

President Hanson reported that because the 2nd Pipeline Project was not going forward it would be necessary that the Board reject the construction bid from Blois Construction, Inc.

Director Morgan moved to reject Blois Construction, Inc.'s bid and all other bids for the SCC Upper Reach Reliability Project (2nd Pipeline Project), and to direct staff to send a letter to Mr. Blois notifying him of the bid rejection, seconded by Director Francisco, passed 6/0/1, Director Beebe abstained.

9. Reports From the Manager

a. Cachuma Water Reports

The monthly water reports were included in the board packet.

b. Operations Report

The Operations Report was included in the board packet. Included with the monthly Operations Report was the quarterly report on the Land Use activities. The Board requested that additional information be added to the next Land Use activities report regarding the extent of the project.

c. Cachuma Reservoir Current Conditions and 2011 Spill

The daily operations report for Lake Cachuma through March 23, 2011 was included in the board packet.

d. Operating Committee Meeting, March 2, 2011 Draft Minutes

The draft minutes from the March 2, 2011 Operating Committee meeting were included in the board packet.

e. CFCC Funding Fair, March 7, 2011

Ms. Rees included the agenda from the California Financing Coordinating Committee Funding Fair she attended March 8, 2011 in Visalia, California.

f. Lauro Dam Early Warning System Public Meeting, March 16, 2011

The notice for the public information meeting for the Lauro Dam Early Warning System was included in the board packet. President Hanson thanked the staff for their efforts in preparing for this meeting.

g. Public Meeting Regarding Kayaking on Lake Cachuma – Santa Barbara County Parks Department, March 4, 2011

Ms. Rees reported on the public meeting she attended regarding kayaking on Lake Cachuma. The County is considering modifying their ordinance for recreation in Lake Cachuma to include kayaking and canoeing on the Lake, as was approved by the Bureau of Reclamation in their new long term Resource Management Plan.

h. Fisheries Program Report

The monthly Fisheries Program report was included in the board packet.

i. NMFS Letter Regarding Biological Opinion Coverage for Quiota Creek Fish Passage Projects

The U.S. Army Corps of Engineers (ACOE) is the lead agency for ESA Section 7 consultation for steelhead for the Quiota Creek fish passage project at Crossing 2. In response to a letter to NMFS requesting concurrence that the project would have no adverse effect, NMFS expressed their opinion that the project would have an adverse effect. The letter also stated that because the take provision in the Cachuma Biological Opinion (BO) had been exceeded in past years, and was likely to be exceeded again this year, the existing BO did not provide take coverage for the project. This is something that needs to be rectified during reconsultation in a new BO. In lieu of using the Cachuma BO, NMFS has recommended that the ACOE use the Department of Fish and Game's programmatic Biological Opinion which covers any project that is approved for grant funding from DFG's Restoration Grant Program.

The Board would like to have written clarification of the intent of NMFS letter regarding take coverage for Crossing 2, and what Reclamation's Biological Opinion requirements are for future fish passage projects with regard to permit applications.

10. Directors' Request for Agenda Items for Next Meeting

Director Beebe requested a report on a possible loan to COMB for the two Quiota Creek projects from MWD and ID#1.

11. Meeting Schedule

- The next regular Board meeting will be held April 25, 2011 at 2:00 P.M.

The Agendas and Board Packets are available on the COMB website, www.cachuma-board.org

COMB
Statement of Net Assets
As of March 31, 2011

	<u>Mar 31, 11</u>
ASSETS	
Current Assets	
Checking/Savings	
TRUST FUNDS	
1210 · WARREN ACT TRUST FUND	82,350.66
1220 · RENEWAL FUND	5,017.36
Total TRUST FUNDS	<u>87,368.02</u>
1050 · GENERAL FUND	162,363.41
1100 · REVOLVING FUND	203,812.05
Total Checking/Savings	<u>453,543.48</u>
Other Current Assets	
1010 · PETTY CASH	400.00
1200 · LAIF	54,587.39
1300 · DUE FROM CCRB	12,765.48
1303 · Bradbury SOD Act Assmnts Rec	62,658.00
1304 · Lauro Dam SOD Assesmnt Rec	18,797.00
1400 · PREPAID INSURANCE	15,421.72
1401 · W/C INSURANCE DEPOSIT	6,529.00
Total Other Current Assets	<u>171,158.59</u>
Total Current Assets	624,702.07
Fixed Assets	
1500 · VEHICLES	416,014.47
1505 · OFFICE FURN & EQUIPMENT	306,632.69
1510 · MOBILE OFFICES	97,803.34
1515 · FIELD EQUIPMENT	427,197.49
1525 · PAVING	22,350.00
1550 · ACCUMULATED DEPRECIATION	-995,186.18
Total Fixed Assets	<u>274,811.81</u>
Other Assets	
1910 · LT Bradbury SOD Act Assess Rec	5,623,581.07
1920 · LT Lauro SOD Act Assess Rec	965,337.00
Total Other Assets	<u>6,588,918.07</u>
TOTAL ASSETS	<u><u>7,488,431.95</u></u>
LIABILITIES & Net Assets	
Liabilities	
Current Liabilities	
Accounts Payable	
2200 · ACCOUNTS PAYABLE	58,950.96
Total Accounts Payable	<u>58,950.96</u>
Other Current Liabilities	
Payroll-CCRB DepPrm	2.31
Payroll-DepPrm Admin	10.00

COMB
Statement of Net Assets
As of March 31, 2011

	<u>Mar 31, 11</u>
Payroll-DepPrm FD	2.31
Payroll-DepPrm Ops	9.24
2550 · VACATION/SICK	104,583.27
2561 · BRADBURY DAM SOD ACT	62,658.61
2562 · SWRCB-WATER RIGHTS FEE	0.75
2563 · LAURO DAM SOD ACT	18,797.00
2565 · ACCRUED INTEREST SOD ACT	87,008.00
2590 · DEFERRED REVENUE	87,368.02
Total Other Current Liabilities	<u>360,439.51</u>
Total Current Liabilities	419,390.47
Long Term Liabilities	
2602 · LT SOD Act Liability-Bradbury	5,623,581.07
2603 · LT SOD Act Liability - Lauro	965,337.00
2604 · OPEB LT Liability	96,113.00
Total Long Term Liabilities	<u>6,685,031.07</u>
Total Liabilities	7,104,421.54
Net Assets	
Invested in Capital Assets - net of related debt	274,811.81
Unrestricted Net Assets	109,197.65
Total Net Assets	<u>384,010.41</u>
TOTAL LIABILITIES & NET ASSETS	<u><u>7,488,431.95</u></u>

These draft statements represent the resulting disposition of net assets & liabilities as if the legal documents for the re-organization of CCRB and COMB were in effect as of January 1, 2011.

COMB
Statement of Revenues and Expenditures
Budget vs. Actual
 July 2010 through March 2011

04/18/11
 Accrual Basis

	Jul '10 - Mar 11	Budget	\$ Over Budget	% of Budget
Income				
3000 REVENUE				
3001 · O&M Budget (Qtrly Assessments)	1,718,550.00			
3004 · WIP Revenue	171,220.00			
3006 - Warren Act Trust Fund	12,249.19			
3007 · Renewal Fund	5,011.65			
3010 · Interest Income	1,318.13			
3020 · Misc Income	573.58			
3035 · Cachuma Project Betterment Fund	73,000.00			
Total 3000 REVENUE	1,981,922.55			
Total Income	1,981,922.55			
4999 - GENERAL & ADMINISTRATIVE				
5000 · Director Fees				
5001 · Director Mileage	734.10			
5000 · Director Fees - Other	7,936.00	12,000.00	-4,064.00	66.13%
Total 5000 · Director Fees	8,670.10	12,000.00	-3,329.90	72.25%
5100 · Legal	53,948.18	82,500.00	-28,551.82	65.39%
5101-1 · Audit	12,500.00	12,500.00	0.00	100.0%
5150 · Unemployment Tax	3,320.00			
5200 · Liability Insurance	41,009.00	38,000.00	3,009.00	107.92%
5201 · Health & Workers Comp	56,731.80	73,647.00	-16,915.20	77.03%
5250 · PERS	29,448.73	41,362.00	-11,913.27	71.2%
5260 · Company FICA Admin	10,119.27	16,152.00	-6,032.73	62.65%
5265 · Company MCARE Admin	2,692.42	3,675.00	-982.58	73.26%
5300 · Manager Salary	54,077.00	74,000.00	-19,923.00	73.08%
5301 · Administrative Manager	70,298.48	96,200.00	-25,901.52	73.08%
5306 · Administrative Assistant	43,476.93	59,436.00	-15,959.07	73.15%
5310 · Postage/Office Exp	5,985.86	7,000.00	-1,014.14	85.51%
5311 · Office Equip/Leases	5,072.87	6,200.00	-1,127.13	81.82%
5312 · Misc Admin Expenses	8,574.44	10,000.00	-1,425.56	85.74%
5313 · Communications	3,109.14	6,000.00	-2,890.86	51.82%
5314 · Utilities	5,805.55	7,000.00	-1,194.45	82.94%
5315 · Membership Dues	5,889.50	6,050.00	-160.50	97.35%
5316 · Admin Fixed Assets	0.00	5,000.00	-5,000.00	0.0%
5318 · Computer Consultant	13,815.53	15,000.00	-1,184.47	92.1%
5325 · Emp Training/Subscriptions	2,758.81	3,000.00	-241.19	91.96%

ITEM # 46
 PAGE 3

COMB
Statement of Revenues and Expenditures
Budget vs. Actual
 July 2010 through March 2011

04/18/11
 Accrual Basis

	Jul '10 - Mar 11	Budget	\$ Over Budget	% of Budget
5330 · Admin Travel/Conferences	2,807.97	3,000.00	-192.03	93.6%
5331 · Public Information	729.33	1,000.00	-270.67	72.93%
5332 · Transportation	607.28	1,000.00	-392.72	60.73%
Total 4999 · GENERAL & ADMINISTRATIVE	441,448.19	579,722.00	-138,273.81	76.15%
5510 · Integrated Reg. Water Mgt Plan	0.00	25,000.00	-25,000.00	0.0%
Operations Division				
3100 · LABOR - OPERATIONS				
3101-A · Ops Supervisor	64,918.51			
3101-E · Engineer	62,962.76			
3101-H · Holiday Leave	9,688.05			
3101-S · Sick Leave	43,319.60			
3101-V · Vacation Leave	24,440.56			
3102 · Meter Reading	2,253.01			
3103 · SCC Ops	87,562.89			
3104 · Veh & Equip Mtce	5,541.53			
3105 · SCADA	929.71			
3106 · Rodent Bait	1,996.70			
Total 3107 · NORTH PORTAL	5,790.99			
Total 3108 · GLEN ANNE	16,232.98			
Total 3110 · LAURO	32,485.07			
Total 3111 · OFFICE	642.08			
Total 3112 · SHEFFIELD	4,407.32			
Total 3113 · ORTEGA	9,961.11			
Total 3114 · BOUNDARY METER	61.58			
Total 3115 · CARPINTERIA	3,654.22			
Total 3116 · GOLETA REACH	3,991.07			
Total 3117 · CARPINTERIA REACH	9,030.70			
3150 · Health & Workers Comp	130,228.01			
3155 · PERS	56,753.04			
3160 · Ops Co FICA	26,074.71			
3165 · Ops Co Medicare	6,199.86			
Total 3100 · LABOR - OPERATIONS	821,762.00		-212,636.30	74.12%
3200 VEH & EQUIPMENT				
3201 · Vehicle/Equip Mtce	22,381.95	25,000.00	-2,618.05	89.53%

ITEM # 46
 PAGE 4

COMB
Statement of Revenues and Expenditures
Budget vs. Actual
July 2010 through March 2011

04/18/11
 Accrual Basis

	Jul '10 - Mar 11	Budget	\$ Over Budget	% of Budget
3202 · Fixed Capital	8,556.34	10,000.00	-1,443.66	85.56%
3203 · Equipment Rental	924.40	5,000.00	-4,075.60	18.49%
3204 · Miscellaneous	1,576.02	5,000.00	-3,423.98	31.52%
Total 3200 VEH & EQUIPMENT	33,438.71	45,000.00	-11,561.29	74.31%
3300 · CONTRACT LABOR				
3301 · Conduit, Meter, Valve & Misc	6,278.64	12,000.00	-5,721.36	52.32%
3302 · Buildings & Roads	12,653.57	10,000.00	2,653.57	126.54%
3303 · Reservoirs	1,895.04	25,000.00	-23,104.96	7.58%
3304 · Engineering, Misc Services	0.00	30,000.00	-30,000.00	0.0%
Total 3300 · CONTRACT LABOR	20,827.25	77,000.00	-56,172.75	27.05%
3400 · MATERIALS & SUPPLIES				
3401 · Conduit, Meter, Valve & Misc	19,245.92	25,000.00	-5,754.08	76.98%
3402 · Buildings & Roads	3,346.73	12,000.00	-8,653.27	27.89%
3403 · Reservoirs	4,748.02	10,000.00	-5,251.98	47.48%
Total 3400 · MATERIALS & SUPPLIES	27,340.67	47,000.00	-19,659.33	58.17%
3500 · OTHER EXPENSES				
3501 · Utilities	4,570.11	6,500.00	-1,929.89	70.31%
3502 · Uniforms	1,735.61	2,500.00	-764.39	69.42%
3503 · Communications	13,214.27	20,000.00	-6,785.73	66.07%
3504 · USA & Other Services	938.16	4,000.00	-3,061.84	23.45%
3505 · Miscellaneous	8,631.53	8,000.00	631.53	107.89%
3506 · Training	3,090.75	4,000.00	-909.25	77.27%
Total 3500 · OTHER EXPENSES	32,180.43	45,000.00	-12,819.57	71.51%
6000 · SPECIAL PROJECTS				
6062 · SCADA	10,398.11	26,500.00	-16,101.89	39.24%
6090-1 · COMB Bldg/Grounds Repair	24,703.43	50,000.00	-25,296.57	49.41%
6092-1 · SCC Improv Plan & Design - UF	0.00	-116,220.00	116,220.00	0.0%
6092 · SCC Improv Plan & Design	161,150.20	246,220.00	-85,069.80	65.45%
6095 · SCC Valve & Cntrl Sta Rehab	0.00	35,000.00	-35,000.00	0.0%
6096 · SCC Structure Rehabilitation	15,480.80	60,000.00	-44,519.20	25.8%
6097 · GIS and Mapping	12,376.99	41,000.00	-28,623.01	30.19%
6100 · Sanitary Survey	45,497.46	51,260.00	-5,762.54	88.76%
Total 6000 · SPECIAL PROJECTS	269,606.99	393,760.00	-124,153.01	68.47%

ITEM # 46
 PAGE 5

Statement of Revenues and Expenditures
Budget vs. Actual

July 2010 through March 2011

TOTAL

	Jul '10 - Mar 11	Budget	\$ Over Budget	% of Budget
6400 · STORM DAMAGE				
6403 · Jesusita Fire Damage	31,118.00	55,000.00	-23,882.00	56.58%
Total Operations Expense	1,023,637.75	1,484,522.00		
Fisheries Division				
4100 · LABOR - FISHERIES				
4101 · Senior Resource Scientist	13,729.38	30,000.00	-16,270.62	45.77%
4102 · Project Biologist	20,257.56	44,000.00	-23,742.44	46.04%
4103 · Biologist	15,832.52	34,000.00	-18,167.48	46.57%
4110 · Seasonal Aide - BL	2,450.25	1,512.50	937.75	162.0%
4111 · Seasonal Aide - AB	5,162.50	3,750.00	1,412.50	137.67%
4112 · Seasonal Aide - SH	5,889.39	3,850.00	2,039.39	152.97%
4113 · Seasonal Aide - KL	4,178.25	1,929.50	2,248.75	216.55%
4150 · FD Health & WC	20,514.94	29,522.00	-9,007.06	69.49%
4151 · FD PERS	8,647.26	16,974.00	-8,326.74	50.94%
4152 · FD Co FICA	4,480.42	7,500.00	-3,019.58	59.74%
4153 · FD Co Medicare	1,047.85	1,800.00	-752.15	58.21%
Total 4100 · LABOR - FISHERIES	102,190.32	174,838.00	-72,647.68	58.45%
4200 · VEHICLES & EQUIP - FISHERIES				
4270 · Vehicle/Equip Mtce	4,766.09	9,500.00	-4,733.91	50.17%
4280 · Fixed Capital	0.00	9,000.00	-9,000.00	0.0%
4290 · Miscellaneous	543.40	1,500.00	-956.60	36.23%
Total 4200 · VEHICLES & EQUIP - FISHERIES	5,309.49	20,000.00	-14,690.51	26.55%
4220 · CONTRACT LABOR - FISHERIES				
4221 · Meters & Valves	0.00	3,000.00	-3,000.00	0.0%
4222 · Fish Projects Maintenance	0.00	12,500.00	-12,500.00	0.0%
Total 4220 · CONTRACT LABOR - FISHERIES	0.00	15,500.00	-15,500.00	0.0%
4300 · MATERIALS/SUPPLIES - FISHERIES				
4390 · Miscellaneous	302.76	3,600.00	-3,297.24	8.41%
Total 4300 · MATERIALS/SUPPLIES - FISHERIES	302.76	3,600.00	-3,297.24	8.41%
4500 · OTHER EXPENSES - FISHERIES				

Statement of Revenues and Expenditures

Budget vs. Actual

July 2010 through March 2011

TOTAL

	Jul '10 - Mar 11	Budget	\$ Over Budget	% of Budget
4502 · Uniforms	0.00	1,650.00	-1,650.00	0.0%
Total 4500 · OTHER EXPENSES - FISHERIES	0.00	1,650.00	-1,650.00	0.0%
5400 · GENERAL & ADMIN - FISHERIES				
5401 · Health & Workers Comp.	4,735.54	7,757.00	-3,021.46	61.05%
5402 · CalPERS	2,150.16	4,744.00	-2,593.84	45.32%
5403 · Company Fica	907.40	1,804.00	-896.60	50.3%
5404 · Admin Secretary	9,637.96	23,000.00	-13,362.04	41.9%
5405 · GM Salary	2,732.28	6,155.00	-3,422.72	44.39%
5406 · Company MCAre	212.16	422.00	-209.84	50.28%
5407 · Legal - FD	0.00	8,421.00	-8,421.00	0.0%
5410 · Postage / Office Supplies	1,890.49	3,710.00	-1,819.51	50.96%
5411 · Office Equipment / Leases	1,920.33	3,250.00	-1,329.67	59.09%
5412 · Misc. Admin Expense	1,159.58	919.00	240.58	126.18%
5414 · Utilities	2,454.41	3,500.00	-1,045.59	70.13%
5415 · Membership Dues	90.00	2,000.00	-1,910.00	4.5%
5416 · Admin Fixed Assets	0.00	3,500.00	-3,500.00	0.0%
5418 · Computer Consultant	7,070.50	5,000.00	2,070.50	141.41%
5430 · Travel	1,458.84	3,000.00	-1,541.16	48.63%
Total 5400 · GENERAL & ADMIN - FISHERIES	36,419.65	77,182.00	-40,762.35	47.19%
5511 · IRWMP - FISHERIES				
5511 · IRWMP - FISHERIES - Other	0.00	5,000.00	-5,000.00	0.0%
Total 5511 · IRWMP - FISHERIES	0.00	2,500.00	-2,500.00	0.0%
6200 · FISHERIES ACTIVITIES				
6201 · FMP Implementation	17,673.94	88,031.00	-70,357.06	20.08%
6202 · GIS and Mapping	0.00	10,000.00	-10,000.00	0.0%
6203 · Grants Technical Support	0.00	7,540.00	-7,540.00	0.0%
6204 · SYR Hydrology Technical Support	0.00	65,780.00	-65,780.00	0.0%
6205 · USGS Stream Gauge Program	18,462.50	54,698.00	-36,235.50	33.75%
6206 · Tri County Fish Team Funding	0.00	2,500.00	-2,500.00	0.0%
6207 · Oak Tree Restoration Program	17,957.00	76,628.00	-58,671.00	23.43%
6208 · Legislative & Steelhead Funding	0.00	8,000.00	-8,000.00	0.0%
Total 6200 · FISHERIES ACTIVITIES	54,093.44	123,998.00	-69,904.56	43.62%
6300 · HABITAT ENHANCEMENT				
6301 · Conservation Easements	0.00	10,000.00	-10,000.00	0.0%

Local Agency Investment Fund
 P.O. Box 942809
 Sacramento, CA 94209-0001
 (916) 653-3001
 CACHUMA OPERATION AND MAINTENANCE BOARD

www.treasurer.ca.gov/pmia
 -laif
 April 15, 2011

GENERAL MANAGER
 3301 LAUREL CANYON ROAD
 SANTA BARBARA, CA 93105-2017

PMIA Average Monthly Yields

Transactions

Tran Type Definitions

March 2011 Statement

Effective Date	Transaction Date	Tran Type	Confirm Number	Authorized Caller	Amount
3/1/2011	2/28/2011	RW	1308024	KATHLEEN REES	-126,000.00

Account Summary

Total Deposit:	0.00	Beginning Balance:	180,587.39
Total Withdrawal:	-126,000.00	Ending Balance:	54,587.39

MEMO TO: Board of Directors
 Cachuma Operation & Maintenance Board

FROM: Kathleen Rees, Secretary

SUBJECT: COMB INVESTMENT POLICY

The above statement of investment activity for the month of March, 2011, complies with legal requirements for investment policy of government agencies, AB 1073. I hereby certify that it constitutes a complete and accurate summary of all LAIF investments of this agency for the period indicated.

Kathleen Rees
 Secretary

ITEM # 46
 PAGE 9

**SANTA BARBARA
BANK & TRUST**

P.O. Box 60839, S.B., CA, 93160-0839

3417

Cachuma Operation & Maintenance Board
Master Contract Renewal Fund
3301 Laurel Canyon Rd
Santa Barbara CA 93105-2017

Banking Statement

Statement Period: 03/01/2011 to 03/31/2011

Customer Number:

Customer Service Representative
(888) 400-SBBT (400-7228)

BANKLINE-24-HOUR AUTOMATED INFORMATION
(800) 287-SBBT (287-7228)

www.sbbt.com

Our Community. Your Bank.

It is our objective to assist you in selecting products and services that meet your personal and business needs. If you have any questions regarding your account, please feel free to call or visit one of our bankers for assistance.



Business Money Market

Checking Summary

Cachuma Operation & Maintenance Board

Master Contract Renewal Fund

Account Number	102335072
Interest Paid YTD	3.71
Interest Paid Last Year	39.98

Deposit Account Recap

Beginning Balance as of

March 1, 2011 KP 4/1/11 5,017.36

1 Deposits (Plus) 1.28

Ending Balance as of

March 31, 2011 5,018.64

Interest Paid 1.28

MEMO TO: Board of Directors
Cachuma Operation & Maintenance Board

FROM: Kathleen Rees, Secretary

SUBJECT: COMB INVESTMENT POLICY

The above statement of investment activity for the month of March, 2011, complies with legal requirements for investment policy of government agencies, AB 1073. I hereby certify that it constitutes a complete and accurate summary of all Santa Barbara Bank & Trust investments of this agency for the period indicated.

Kathleen Rees
Secretary

ITEM # 46
PAGE 10

**SANTA BARBARA
BANK & TRUST**

P.O. Box 60839, S.B., CA, 93160-0839

3418

Cachuma Operation & Maintenance Board
Cachuma Project Trust Fund
3301 Laurel Canyon Rd
Santa Barbara CA 93105-2017

Banking Statement

Statement Period: 03/01/2011 to 03/31/2011

Customer Number:

Customer Service Representative
(888) 400-SBBT (400-7228)

BANKLINE-24-HOUR AUTOMATED INFORMATION
(800) 287-SBBT (287-7228)

www.sbbt.com

Our Community. Your Bank.

It is our objective to assist you in selecting products and services that meet your personal and business needs. If you have any questions regarding your account, please feel free to call or visit one of our bankers for assistance.

Public Capital Tiered MMDA

Checking Summary

Cachuma Operation & Maintenance Board

Cachuma Project Trust Fund

Account Number	102335080
Interest Paid YTD	68.71
Interest Paid Last Year	447.50

Deposit Account Recap

Beginning Balance as of

March 1, 2011 82,350.66 ✓

1 Deposits (Plus) 24.48

Ending Balance as of

March 31, 2011 82,375.14

Interest Paid 24.48

MEMO TO: Board of Directors
Cachuma Operation & Maintenance Board

FROM: Kathleen Rees, Secretary

SUBJECT: COMB INVESTMENT POLICY

The above statement of investment activity for the month of March, 2011, complies with legal requirements for investment policy of government agencies, AB 1073. I hereby certify that it constitutes a complete and accurate summary of all Santa Barbara Bank & Trust investments of this agency for the period indicated.

Kathleen Rees
Secretary

ITEM # 46
PAGE 11

comb2
Payment of Claims
As of March 31, 2011

	Date	Num	Name	Memo	Amount
1050 - GEN FUND	03/01/2011	19699	COMB - Revolving Fund	Mar 4 & 18 payroll/taxes	-126,027.60
	03/09/2011	19700	Employment Development Dept.	Unemployment KB/BG	-3,320.00
	03/09/2011	19701	Federal Express	Mailings-Crossing #2	-98.25
	03/09/2011	19702	HDR Engineering, Inc.	Salsi Crk/Jalama fish ldr redesign/Quiota Crk fish psg xng	-3,420.75
	03/09/2011	19703	Nordman, Cormany, Hair & Compton	Gen Counsel-Brown matter Jan services	-2,797.50
	03/09/2011	19704	Nordman, Cormany, Hair & Compton	Gen Counsel-Jan services	-4,117.50
	03/09/2011	19705	PAPA	QAC Seminars-FB/DN/JS	-640.00
	03/10/2011	19706	A-OK Mower Shops, Inc.	Blades/Stihl saw	-701.15
	03/10/2011	19707	Acorn Landscape Management Co.	Scheduled mtce	-253.17
	03/10/2011	19708	ACWA Health Benefits Auth. (HBA)	4/1-5/1/11 coverage	-16,627.27
	03/10/2011	19709	ACWA Health Benefits Authority (HBA)	Apr EAP	-49.56
	03/10/2011	19710	AECOM USA Inc.	TO#31 Coord mtgs/Eng-Tech support (Brown prop) 12/18/	-4,345.43
	03/10/2011	19711	AECOM USA Inc.	TO#30 Rel/Alt Study-Lower Reach Ortega to Carp (Reach	-8,588.73
	03/10/2011	19712	AECOM USA Inc.	TO#31-SCC coord mtgs/misc eng/tech support	-3,121.55
	03/10/2011	19713	AECOM USA Inc.	TO#18 2nd Barrel Design-Phase II Dec/Jan/Feb	-1,213.57
	03/10/2011	19714	All-Cal Equipment Service, Inc.	Annual inspection-NP crane	-250.00
	03/10/2011	19715	AT&T	Feb statement	-355.45
	03/10/2011	19716	Bedrock Building Supplies	Cement mix/wood floats/trowels	-200.64
	03/10/2011	19717	Boone Graphics	Letterhead-COMB & CCRB	-244.99
	03/10/2011	19718	Business Card	JG-Webhost/KR-Water Users Conf-travel, meals/ JC-Technology conf/Greenbook supplement/bag fee	-1,122.15
	03/10/2011	19719	Calif Dept of Forestry & Fire Protection	Ortega/Glen Anne res work	-443.04
	03/10/2011	19720	Cardno ENTRIX	SCC Upper Reach Rel Jan PO#09-10-21	-433.89
	03/10/2011	19721	Applied EarthWorks, Inc.	Historical Res Recordation-response to comments PO#09-	-763.70
	03/10/2011	19722	Cardno ENTRIX	Fisheries Assistance	-2,542.94
	03/10/2011	19723	CIO Solutions, LP	Agmt-Extreme works Summit/Support/Antivirus-spam	-2,762.00
	03/10/2011	19724	City of Santa-Barbara	Refuse/recycle 1/28-2/28/11	-162.70
	03/10/2011	19725	City of Santa Barbara-Central Stores	Gloves	-118.89
	03/10/2011	19726	Coastal Copy, LP	Copier lease-KM4035/TASKalfa 250	-305.80
	03/10/2011	19727	COMB-Petty Cash	Replenish petty cash	-335.46
	03/10/2011	19728	Cox Communications	Business internet Mar	-195.00
	03/10/2011	19729	Crop Production Services	Roundup	-2,061.67
	03/10/2011	19730	Culligan Water	RO system Mar	-24.95
	03/10/2011	19731	Dale Francisco	Feb mtg fees	-132.23
	03/10/2011	19732	Dennis E. Beebe	Feb mtg fees	-156.92
	03/10/2011	19733	Duraframe Dipnet	Nets PO#8994	-184.65
	03/10/2011	19734	Eaton Corporation	Fan for SCADA comm.	-160.51
	03/10/2011	19735	ECHO Communications	Answering service	-65.60
	03/10/2011	19736	Electronic Data Solutions	Pro XRT mounting clip/bluetooth PO#8996	-76.30
	03/10/2011	19737	Fluidigm Corporation	BioMark Dynamic Array chip-Genotyping PO#9002	-15,131.00
	03/10/2011	19738	GE Capital	Copier lease-KM4035/TASKalfa 250	-634.01
	03/10/2011	19739	Graham Chevrolet-Cadillac	Part-'00b Chevy	-32.19
	03/10/2011	19740	Graybar Electric Company, Inc.	Wiring/lighting	-381.62
	03/10/2011	19741	Growing Solutions	Plant care-2nd barrel site PO#8987	-100.00
	03/10/2011	19742	Hydrex Pest Control Co.	Ant/pest control	-80.00
	03/10/2011	19743	Larry's 8-Day Auto Parts	Misc supplies	-42.59
	03/10/2011	19744	Laser Cartridge Co.	Cartridge recharge 4600	-162.80
	03/10/2011	19745	Lauren W. Hanson	Feb mtg fees	-133.10
	03/10/2011	19746	MarBorg Industries	Portable toilets	-328.62
	03/10/2011	19747	McCormix Corp.	Diesel fuel	-253.38
	03/10/2011	19748	Melinda L. Fournier	Oak tree/Honeysuckle restoration-Jan	-2,020.00
	03/10/2011	19749	Melinda L. Fournier	Oak Tree Restoration Program	-10,887.00
	03/10/2011	19750	Melinda L. Fournier	Oak tree/Honeysuckle restoration-Feb	-5,068.00
	03/10/2011	19751	Milpas Rental	Chipper rental	-153.32
	03/10/2011	19752	Nextel Communications	Cellular	-441.50
	03/10/2011	19753	Nordman, Cormany, Hair & Compton	Gen Counsel-Brown matter Feb services Gen Emp Counsel-Feb services	-555.00
	03/10/2011	19754	O'Reilly Automotive, Inc.	Battery	-86.22
	03/10/2011	19755	Ogden Signs	50% deposit-Signs for yard/offices	-950.00
	03/10/2011	19756	Paychex, Inc.	2/4, 18 payrolls/taxes	-269.36
	03/10/2011	19757	PG&E	NP/Tecolote tunnel	-190.75
	03/10/2011	19758	Praxair Distribution, Inc	Cylinder rental	-52.31
	03/10/2011	19759	Prudential Overall Supply	Mats	-141.68
	03/10/2011	19760	Rauch Communication Consultants, LLC	Newsletter-finalize to provide digitally/quotes for pint and rr	-112.50
	03/10/2011	19761	Republic Elevator Co.	Scheduled mtce-NP elevator	-266.91

comb2
Payment of Claims
 As of March 31, 2011

<u>Date</u>	<u>Num</u>	<u>Name</u>	<u>Memo</u>	<u>Amount</u>
03/10/2011	19762	Robert R. Lieberknecht	Feb mtg fees	-142.43
03/10/2011	19763	Santa Barbara Police Department	Renewal-Security Alarm Reg#6439	-40.00
03/10/2011	19764	Southern California Edison	Main ofc/outlying stations	-1,342.79
03/10/2011	19765	Specialty Tool, LTD	Nuts/shop towels	-19.14
03/10/2011	19766	Staples Credit Plan	Office Supplies	-587.43
03/10/2011	19767	State Compensation Insurance Fund	Payroll Report Feb 2011	-4,722.02
03/10/2011	19768	Summers Engineering, Inc.	Watershed Sanitary Survey-4th progress billing	-14,492.48
03/10/2011	19769	Tesco Controls, Inc.	Extended SCADA support srvc/mtce pkg 12/1/10-11/30/11	-9,320.00
03/10/2011	19770	The Gas Company	Main ofc	-93.86
03/10/2011	19771	Tierra Contracting, Inc.	Montecito Water Barker Pass pump station PO#10-11-07	-5,785.00
03/10/2011	19772	Underground Service Alert of So. Calif.	Feb tickets	-58.50
03/10/2011	19773	United States Geological Survey	Agmt#11W4CAD44600 1st Qrtly billing Agmt Dated 5/5/10	-18,462.50
03/10/2011	19774	UPS	Shipping	-11.33
03/10/2011	19775	Verizon California	Main ofc/outlying stations	-460.16
03/10/2011	19776	Verizon Wireless	Cellular	-131.68
03/10/2011	19777	W. Douglas Morgan	Feb mtg fees	-138.20
03/15/2011	19778	ACWA/Joint Powers Insurance Authority	Employee Fidelity Program 4/1/11-4/1/12	-910.00
03/15/2011	19779	AECOM USA Inc.	TO#30 Rel/Alt Study-Lower Reach Ortega to Carp (Reach	-4,040.54
03/15/2011	19781	MCT Trailers	Big Tex trailer PO#9008	-5,225.76
03/15/2011	19782	Southern California Edison	Corona-Glen Anne Rd/Glen Anne gate/Foothil Rd	-78.48
03/15/2011	19783	Verizon California	SCADA	-522.34
03/15/2011	19784	HDR Engineering, Inc.	Salsi Crk/Jalama fish ldr redesign/Quiota Crk fish psg xng	-12,529.85
03/16/2011	19785	J&C Services	Ofc cleaning 2/18,25, 3/4,11	-500.00
03/24/2011	19786	Coastal Copy, LP	Copier lease/mtce agmt-KM4035/TASKalfa 250	-226.49
03/24/2011	19787	Federal Express	Mailing	-16.34
03/24/2011	19788	Ogden Signs	Signs for yard/offices-Final payment	-983.00
03/24/2011	19789	Premiere Global Services	Conf. calls Feb	-44.58
03/24/2011	19790	Reserve Account	Postage refill	-600.00
03/24/2011	19791	State Compensation Insurance Fund	Payroll Report Mar 2011	-4,713.68
03/24/2011	19792	The Gas Company	Main ofc	-97.58
03/28/2011	19793	Armand Barilotti	Reimb	-88.22
03/29/2011	19794	Bureau of Reclamation	2nd Period Entitlement 4/1/11-9/30/11	-1,551,316.56
03/29/2011	19795	US Postal Service	Postage for Winter Newsletter	-246.40
03/30/2011	19796	COMB - Revolving Fund	Apr 1, 15 & 29 payroll/taxes	-196,558.86
03/30/2011	19797	Tim Robinson	Reimb hotel stay-SRF Conf	-232.96
Total 1050 · GENERAL FUND				<u>-2,061,634.53</u>
				<u>-2,061,634.53</u>

STEPS AND TIMELINE FOR REORGANIZATION ACTIVITIES
(revised 4/25/11)

DATE	ACTIVITY	AGENCY
2/3/11	Ad Hoc Committee reached tentative agreement on Concept Reorganizational Structure for CCRB and COMB	Reorg Ad Hoc Com
2/15/11	ID1 approved Draft Joint Defense and Cooperation Agreement among CCRB, ID1, and SYRWCD	ID1
2/28/11	CCRB approved Draft Joint Defense and Cooperation Agreement among CCRB, ID1, and SYRWCD	CCRB
	Tony Trembley directed to draft amendments to COMB JPA per Concept Reorganizational Structure, to be reviewed by Ad Hoc Committee	Tony Trembley
	Chip Wullbrandt directed to draft new agreement for COMB to implement certain CCRB & ID1 2001 Fish MOU responsibilities, to be reviewed by Ad Hoc Committee	Chip Wullbrandt
3/2/2011	SYRWCD approved Draft Joint Defense and Cooperation Agreement among CCRB, ID1, and SYRWCD	SYRWCD
March 2011	Amendment to COMB JPA drafted per Concept Reorganizational Structure; review by Ad Hoc Committee	Tony Trembley Reorg Ad Hoc Com
	Agreement drafted regarding COMB implementing CCRB & ID1 2001 Fish MOU responsibilities per the terms of the Concept Reorganizational Structure; review by Ad Hoc Committee	Chip Wullbrandt Reorg Ad Hoc Com
April 2011	Member Units reviewed draft Amendment to COMB JPA and draft Agreement for Fish MOU Implementation	GWD, City, MWD, CVWD, ID1
April 2011	Staff prepared initial draft MCA27 5-Year Plan and 2012 Annual Plan	COMB Staff
4/15/11	Ad Hoc Committee discussed proposed revisions to draft Amendment to COMB JPA	Reorg Ad Hoc Com
	Ad Hoc Committee discussed proposed revisions to draft Agreement for Fish MOU Implementation	Reorg Ad Hoc Com
5/ __/11	Ad Hoc Committee concurs on final draft Amendment to COMB JPA for recommendation to the Member Unit Boards/Council	Reorg Ad Hoc Com
	Ad Hoc Committee concurs on final draft Agreement for Fish MOU Implementation to CCRB, ID1 and COMB Boards	Reorg Ad Hoc Com

	Ad Hoc Committee reviews draft MCA27 5-Year Plan and 2012 Annual Plan and provides comments	Reorg Ad Hoc Com
6/14/11	GWD approves Amendment to COMB JPA	GWD
	GWD recommends approval of MCA27 5 Year Plan	GWD
6/14/11	City Council approves Amendment to COMB JPA	City
	City recommends approval of MCA27 5 Year Plan	City
6/14/11	MWD approves Amendment to COMB JPA	MWD
	MWD recommends approval of MCA27 5 Year Plan	MWD
6/22/11	CVWD approves Amendment to COMB JPA	CVWD
	CVWD recommends approval of MCA27 5 Year Plan	CVWD
6/21/11	ID1 approves Amendment to COMB JPA	ID1
	ID1 recommends approval of MCA27 5 Year Plan	ID1
	ID1 approves Agreement for Fish MOU Implementation and authorizes joint CCRB/ID1 letter to 2001 Fish MOU parties (Consensus Committee) informing them that COMB will implement their respective responsibilities in Sections 4 & 5. AMC and Consensus Committee representatives remain with CCRB and ID1	ID1
6/27/11	COMB approves Agreement for Fish MOU Implementation	COMB
	COMB approves MCA27 5-Year Plan by unanimous vote	COMB
	COMB approves final FY 11-12 Budget that includes 2012 MCA27 Annual Plan activities	COMB
	CCRB approves Agreement for Fish MOU Implementation and authorizes joint CCRB/ID1 letter to 2001 Fish MOU parties (Consensus Committee) informing them of using COMB to implement their respective responsibilities in Sections 4 & 5. AMC and Consensus Committee representatives remain with CCRB and ID1.	CCRB
6/28/11	Annual RF/TF Meeting to Approve 2012 Annual Plan and 5 Year Plan	RF/TF Committee

kr.ccrb/admin/board memos _steps&timeline for reorg_rev 042511

ITEM # 66
PAGE 2

CACHUMA OPERATION AND MAINTENANCE BOARD

MEMORANDUM

DATE: April 25, 2011
TO: Board of Directors
FROM: Kate Rees, General Manager
RE: **SANTA YNEZ RIVER RIVERWARE MODEL PEER REVIEW – SOUTH COAST LOCAL REVIEWER**

RECOMMENDATION:

1. That the SYR RiverWare Model peer review should be carried out and funded through COMB.
2. Authorize the General Manager to enter into a contract with the selected local south coast consultant to carry out a local peer review of the SYR RiverWare Model.
3. Authorize \$50,000 for the SYR RiverWare Model peer review to be included in FY 2011-12 COMB Budget.

DISCUSSION:

RFP for Local South Coast Peer Reviewer

The SYR Hydrology Committee representatives held a conference call on March 18, 2011 to discuss how best to carry out the peer review for the Santa Ynez River RiverWare Model. (Participants and meeting notes are attached.) Bruce Wales and Kate Rees contacted CADWES and Reclamation-Denver to refine their respective scopes of work for the peer review of the new RiverWare model. Their work will entail a technical review of the workings of the model platform, its usability, and performance. They will also make suggestions on how the model can be run more efficiently. Their reviews will be completed by the end of May.

It was also decided that a local peer review was needed to evaluate how well the model accurately represents the actual physical parameters, inputs, and flows in the SYR system. Two local hydrologists that know the river well will be engaged to collaboratively carry out a joint peer review. The downstream interests selected Tim Durbin (West Yost), and two consultants are under consideration for the south coast interests – Barry Hecht (Balance Hydrologics) and Steven Bachman. Both of these consultants were highly recommended by one of more representatives of the Hydrology Committee. Mr. Wales, Kate Rees, and Bill Ferguson held a pre-RFP conference call with Barry Hecht, and Mr. Wales, Ms. Rees and Tom Mosby had a similar call with Steve Bachman to fully explain the anticipated work.

Both consultants were interested in providing a proposal for the peer review, and a draft RFP has been written and circulated for comments. We would like to send it to the consultants as soon as possible. It is requested that the General Manager be authorized to contract with the selected local south coast consultant for this work.

Funding Agency

The Santa Ynez River Water Conservation District (SYRWCD) will contract with West Yost for the downstream local peer reviewer. It is appropriate for either COMB or CCRB to contract with the south coast peer reviewer, as both CCRB and COMB will be using the RiverWare model; CCRB for the Biological Opinion reconsultation activities and, potentially, for the water rights hearing proceedings, and COMB for river flow modeling associated with the ongoing SYR Fisheries Program.

Development of the model has been funded through CCRB and ID1 on behalf of the Member Units. Due to the reorganization of CCRB and COMB, all activities except the State Board water rights hearing proceedings and Biological Opinion reconsultation activities were moved into COMB, including budgeted funds in the current fiscal year for the RiverWare peer review. Due to the time it will take for the consultants to submit proposals in response to the RFP, for the south coast representatives to review them, and to select a their consultant, it is unlikely that very much of the peer review work can be completed by June 30, 2011, but Reclamation’s and CADSWES will be. Therefore, additional money will need to be re-budgeted in the FY 11-12 Budget to complete the peer review, as there will be no carry-over of unexpended funds from FY 10-11 to FY 11-12.

My recommendation would be to use COMB as the funding agency for all five Member Units as the most efficient way to contract, budget, and pay for their collective share of the entire peer review by CADSWES, Reclamation, WestYost and the south coast reviewer. The consultants will not be involved in policy or decision making regarding use of the RiverWare model. This is a technical peer review by qualified hydrologic consultants to evaluate the performance of the model itself (Reclamation and CADSWES), and to determine if the model accurately represents the physical SYR system (local reviewers). However, the two local reviewers will have different approaches and may reach different conclusions regarding how the model represents flows in the Santa Ynez River or other physical parameters. The goal is to have one report produced collaboratively by the two local reviewers with recommendations that they agree on. Those recommendations would then go to Stetson Engineers for them to make any necessary adjustments to the RiverWare model. Chris Dahlstrom has requested that this work be carried out through CCRB, ID1, and CVWD.

Budget

COMB has about \$60,000 in the current fiscal year FY 10-11 budget available for the peer review. However, as mentioned previously, most of the work will not occur this fiscal year. The following is an estimate of costs put together by Bruce Wales, and was discussed with the Hydrology Committee on the March 18th conference call. It was agreed that all participants would share in the cost for all consultants.

FY 10-11

Reclamation-Denver	\$ 5,000	to be paid by Fresno with unused Cachuma funds
CADSWES	\$10,000	to be paid through Stetson Engineers under Stetson’s current contract

FY 11-12

Stetson Engineers	\$20,000	
WestYost	\$20,000	
South Coast Reviewer	\$35,000	
Contingency	<u>\$10,000</u>	
Total Cost	\$85,000	COMB Cost \$50,000
		SYRWCD Cost \$35,000

Because all of the participants will be using the new RiverWare Model for their individual District/City needs, it was suggested that the cost be shared equally among the 9 participants. The Member Units, therefore, would pay \$10,000 each through the COMB Budget.

Respectfully submitted,



Kate Rees
General Manager

kr/COMB/admin/board memos_Riverware peer review budgeting.mmo

CACHUMA OPERATION AND MAINTENANCE BOARD

MEMORANDUM

DATE: April 25, 2011
TO: Board of Directors
FROM: Kate Rees, General Manager
RE: QUIOTA CREEK PROJECTS MEETING WITH COUNTY

RECOMMENDATION:
None at this time. For information only.

DISCUSSION:

A meeting was held with County management and Transportation Department engineers on April 11, 2011 to discuss the planned Quiota Creek Fish Passage Projects on Refugio Road. Attendees included: Scott McGolpin, Tom Fayram, Dace Morgan, Chris Sneddon, Eric Pearson, Kate Rees, Tim Robinson, and Tom Mosby. The purpose of the meeting was to discuss cooperation between COMB and the County with regard to design review, encroachment permit requirements, and overall assistance by the County to complete these required Biological Opinion projects.

It was an excellent meeting and Mr. McGolpin, particularly, was very clear in his desire to cooperate on these projects. He fully acknowledged that once the County signs off on the encroachment permits, that it will assume 100% liability for the bridges and the roadway. Therefore, they must be sure that certain standards are met in the design and construction.

The meeting accomplished a great deal, and we were made aware of several things that County staff had provided for the Quiota Crossing 6 Project of which we were unaware.

1. The status of the County's design review for Quiota Crossings 2 and 7 were discussed and schedules set to get them completed. Updated design calcs to meet LRFD code are needed so that the County can submit the as-built drawings to Caltrans to get a bridge number assigned in order to be eligible for future federal funding for maintenance or repair. Coordination between the County's engineers and COMB's fish passage engineer was also established to address discrepancies between the design calcs and the soils report footing requirements.
2. Engineering oversight by MNS required by the County for Quiota 6 was reviewed, and it was determined that COMB's requirement was necessary and provided good value for the cost. We were not treated differently than anyone else, and the County places the same engineering oversight requirements on its own projects. MNS was suggested

because they have bridge experts. They also utilize nuclear gauge compaction testing and all of their engineers are certified inspectors. They handled the lab testing, surveying, concrete testing, and other activities necessary to meet the County permit requirements. MNS' costs for the Quiota 6 project were about \$40,000. This was a much reduced cost calculated on a part time basis, which the County agreed to. Normally this cost is about 20% of the total construction cost, and usually higher for small bridge projects such as those on Refugio Rd. In addition, the County provided their own engineering staff free of charge to provide additional engineering checks on the project and MNS' work. They agreed to continue to provide this service for future Quiota Creek projects.

3. We asked if the County would agree to waive their fees, and were told that all normal permitting fees had been waived for the Quiota 6 project. They will continue to waive fees for future Quiota Creek projects.
4. Many County standards were also granted variances, such as reduced road width, bridge conveyance reduction from 100 year flows to 50 year flows, and crash test strength reduction for the guardrails. These will also be granted for future projects.
5. The County agreed to waive the requirement to use anti-graffiti paint on the bridges, which cost about \$15-\$20K for Quiota 6.
6. The County is working on a design exception for COMB for powder coated guardrails.
7. Quiota Crossing 1 is a new design for a multiple recessed culvert and the County is working with Tim and Mike Garello at HDR on various aspects of the design.
8. Once the County signs off on and encroachment permit, anything within the road right-of-way, the County takes over. But they do not want to have to maintain the fish passage structure under the bridge.
9. They agreed that an MOU was appropriate to define the maintenance responsibilities – the County will maintain the bridge, footings, guardrails, road, etc. COMB will maintain the fish passage structures in the streambed. A draft MOU was written some time ago and has had several rounds of review by COMB staff, County engineers and County Counsel. It was also reviewed briefly by the Member Unit Managers and Bill Hair, albeit some time ago. The draft MOU will be “resurrected” and provided for review and input at the May 4, 2011 Operating Committee meeting.

In sum, I believe that the County did cooperate as fully as possible for the Quiota 6 Project. The major difficulty was that the costs for the County's requirements were unknown at the time and therefore, were not budgeted in the grant application or in the COMB budget. The grants for Crossings 2 and 7 have these costs built in, so we should not see cost overruns to meet County requirements in future.

Respectfully submitted,


Kate Rees
General Manager

kr.COMB/board memos/042511_quiota projects mtg County.mmo

ITEM # 8c
PAGE 2

CACHUMA OPERATION AND MAINTENANCE BOARD

MEMORANDUM

DATE: April 25, 2011
TO: Board of Directors
FROM: Kate Rees, General Manager
RE: CACHUMA PROJECT BETTERMENT FUND

RECOMMENDATION:

Concur with County Water Agency on distribution of the County's Cachuma Betterment Fund of \$100,000 for FY 11-12 as outlined below.

DISCUSSION:

A meeting was held on April 11, 2011 with Tom Fayram and Matt Naftaly from the County Water Agency to discuss how to distribute the \$100,000 Cachuma Betterment Fund for FY 11-12. Historically, this money has been used toward offsetting costs of the SYR Fisheries Program, but for the last three years, the County has suggested that some of the funds go toward something other than the fisheries program. Tom made the following suggestions:

- Cloud seeding program
- Quagga mussel inspection costs
- Lake Cachuma bathymetric survey
- Water Agency stream gauge program in the Santa Ynez River

After some discussion, it was mutually agreed to recommend that \$10,000 be allocated to the Water Agency stream gauge program in the Santa Ynez River. The additional data provided from the flood control/water agency gauges in the SYR will broaden the data base needed to evaluate flows, temperature, and water quality, so it would be a benefit to the Cachuma Project and the Fisheries Program. COMB staff suggested that \$75,000 continue to be applied to the USGS stream gauge program for the fisheries monitoring program, and \$15,000 go toward other Fisheries Monitoring Program expenses. This equates to \$90,000 in revenue to offset the COMB Fisheries Division expenses for FY 11-12.

I believe that this is a very reasonable use of the funds for next year, and request the Board's approval. COMB and the County Water Agency must mutually agree on how the Betterment Fund and the Renewal Fund will be used. Mr. Naftaly and Mr. Fayram indicated that they would support any use of the Renewal Fund monies that the Member Units decide on.

ITEM # 8d
PAGE 1

In summary, the recommended use of the Cachuma Betterment Fund is:

\$ 75,000	Fish USGS Stream Gauge Program in the Santa Ynez River
\$ 10,000	Water Agency Stream Gauge Program in the Santa Ynez River
<u>\$ 15,000</u>	Fisheries Monitoring Program
\$100,000	

Respectfully submitted,



Kate Rees
General Manager

kr.COMB/admin/board memos/042511_betterment fund.mmo

ITEM # 8d
PAGE 2

CACHUMA OPERATION AND MAINTENANCE BOARD

MEMORANDUM

DATE: April 25, 2011

TO: Board of Directors

FROM: Tim Robinson, Sr. Resource Scientist
Kate Rees, General Manager

RE: **March 2011 LOWER SANTA YNEZ RIVER FISHERIES REPORT**

In compliance with the Cachuma Project Biological Opinion (BO) and as described in the Lower Santa Ynez River Fish Management Plan (FMP) and the Monitoring Program in the revised Biological Assessment (BA), the Cachuma Project Biology Staff (CPBS) conducts routine monitoring of steelhead/rainbow trout and their habitat on the Lower Santa Ynez River (LSYR) below Bradbury Dam. The following is a list of activities carried out by CPBS during the month of March 2011 that has been broken out by categories.

Migrant Trapping:

Upstream and downstream migrant traps at Salsipuedes Creek, Hilton Creek and the LSYR mainstem were installed on January 6, 2011. There were two minor (3/3/11 and 3/24/11) and one large (3/20/11) stormflow events during March. All the traps were pulled out of the streams during the large events due to the significant runoff and continue to be out at the LSYR mainstem trap from the continuation of the spill. The trapping results for March are presented in Table 1.

Table 1: March migrant captures at Hilton Creek, LSYR mainstem and Salsipuedes Creek traps.

Location	Upstream Captures	Downstream Captures	Smolts	Anadromous Adults	Installed	Installed	Change Mar 2010 to 2011
					1/6/11	1/23/10	
					Total Mar2011*	Total Mar2010*	
Hilton Creek	12	42	26	0	54	54	0
Salsipuedes Creek	14	73	70	2	87	28	59
LSYR Mainstem	0	0	0	0	0	0	0

* Totals do not include recaptures

March 2011 showed an increase in the number of fish observed at the Salsipuedes Creek trap due to increased streamflow, and no changes were observed from March 2010 to March 2011 at the Hilton Creek and LSYR mainstem traps. The LSYR mainstem trap continued to have no captures throughout the month but a change is anticipated in April due to good migration flows.

Redd Surveys:

The second round of redd surveys for the year were conducted within the LSYR mainstem in the Highway 154, Refugio, and Alisal reaches where access was permitted and certain sections of Hilton, Quiota, and Salsipuedes/El Jaro creeks. Eleven resident rainbow trout redds (identified by their small size) were observed; 10 in El Jaro Creek 7 of which were above the Rancho San Julian Fish Ladder, and 1 in Quiota Creek. No redds were observed in Hilton Creek, Salsipuedes Creek or the management reaches of the LSYR. Redd surveys are conducted once a month from March through May.

ITEM # 8e
PAGE 1

Passage Supplementation:

With Lake Cachuma spilling since 3/20/11 and the lake fully surcharged, the Fish Passage Supplementation Account is now full at 3,200 acre-feet. It is unlikely that the Real-time Decision Group will call for a fish passage event given the spill rate of over 250 cfs as of 4/13/11. The group is in communication and will be monitoring the situation.

Reporting:

Cachuma Project Biology Staff worked on annual monitoring reports and permit applications for the pending fall 2011 tributary projects.

Outreach and Training:

The Winter 2011 FMP Newsletter was finished and distributed to over 550 recipients. The Cachuma Project Biology Staff attend the Salmonid Restoration Federal and American Fisheries Society California-Neva Chapter annual conferences in San Luis Obispo and Folsom, respectively. Three separate talks were given and a poster was presented on the Fisheries Monitoring and Restoration Program. All were well received. The Senior Resource Scientist continues to meet with landowners on Quiota Creek in preparation for constructing fish passage projects this fall.

Consultant Activity Summary (March):

Melinda Fournier Tree Specialist (Melinda Fournier) – Cachuma Lake Oak Tree Restoration Program: monthly field maintenance and nursery operations.

HDR Fisheries Design Center (Mike Garelo) – Design work for Quiota Creek Crossings in preparation for project permitting, regulatory review and grant proposals.

Stetson Engineers (Ali Shahroody) – Santa Ynez River hydrological analyses.

Cardno ENTRIX (Jean Baldrige) – BO Compliance Binder and CD preproduction, and review and statistical analysis for the RPM 6 89-18 release report.

COMB OPERATION AND MAINTENANCE BOARD

MEMORANDUM

DATE: April 25, 2011
TO: Board of Directors
FROM: Kate Rees, General Manager
RE: **MODIFIED SCC UPPER REACH RELIABILITY PROJECT**

RECOMMENDATION:

1. That the Board approve the Modified SCC Upper Reach Reliability Project and schedule as presented.
2. That the Board approve AECOM's Task Order No. 37 for the Modified SCC Upper Reach Reliability Project

DISCUSSION:

Prop 50 Grant for the Modified Upper Reach Reliability Project

In prior Board meetings, the Directors have discussed a Modified SCC Upper Reach Reliability Project, and requested that the State Water Board consider replacing the original 2nd Pipeline Project with a Modified Project for use of the Prop 50 grant that focuses on rehabilitation of the existing SCC and associated structures in the uppermost reach of the SCC. At its March 28, 2011 meeting, the Board authorized sending a letter to the State Board staff with this request. Matt Naftaly, County Water Agency Manager, met with Kelley List and Laura McLean, Prop 50 Project Managers, and put forward COMB's request with the reasons a modified project was necessary at this time.

I am pleased to inform you that the State Board Prop 50 Project Managers have agreed to allow COMB to replace the 2nd Pipeline Project with the Modified Upper Reach Reliability Project, and still receive the full \$3.2 million in Prop 50 grant funds. A modified project description and revised budget and timeline have been sent to the State Board for inclusion in the amendment to the Prop 50 Master Contract. Matching funds submitted to date that apply to the Modified Project have also been submitted to the State Board staff. A schedule for Prop 50 activities for the Modified Project is attached.

Modified Upper Reach Reliability Project

The Modified Project includes the following physical components: replacement of the South Portal Structure, repairs to the Glen Annie Turnout Structure, including a weir modification and meter replacement for the Goleta West meters, inspection of 8,200 feet of the SCC in the Upper Reach, and potentially rehabilitation or replacement of up to 1,500 ft of pipeline due several factors, including corrosion from hydrogen sulfide gas originating from the Tecolote Tunnel, over-pressurized and/or overburdened sections of pipe associated with location, age,

and sub-grade pipeline construction compared to today's engineering standards. These measures will greatly reduce the risk of structural failure of the SCC at various locations in the Upper Reach.

Other Project components include: engineering design, construction phase engineering and construction management, amendment to the 2nd Pipeline Project EIR/EIS, revisions to the regulatory permits, revisions to the temporary construction land use easements; revision to the MP 620 permit with Reclamation, recordation of the destruction of the South Portal Structure per the Section 106 permit requirements, Vegetation Monitoring Plan update, environmental monitoring, and Native American cultural resource monitoring.

Attached is a list of all the Modified Project components and a project schedule that shows the timing of the various components that will be carried out over the next two fiscal years, as well as some preliminary design work before June 30th of this fiscal year. Staff requests approval of the Modified Upper Reach Reliability Project and schedule as presented.

FY 10-11 Budget

In order to complete the Modified Project by March 1, 2013 (the extended Prop 50 deadline) the Project must be bid by late summer as it will take about a year to complete. Therefore, it is necessary to begin the additional engineering design work as soon as possible. There is sufficient money in this year's budget to cover the cost for the preliminary design work and preparation of an amendment to the 2nd Pipeline EIR/EIS by reallocating funds from two budgeted tasks: Pipeline Inspections and Engineering Design for Emergency Tie-In for Sheffield Control Station (Mission Creek). The pipeline inspection funds were to be used to inspect the pipeline on the Brown property once the overburden was removed. However, the Browns have not yet received a grading permit from the County, and it is now too late in the season to carry out a pipeline inspection as the SCC would have to be shut down. It is suggested that the Emergency Tie-In design work be deferred until next fiscal year. Cancelling these two projects will provide about \$75,000 for the Modified Upper Reach Project this year.

AECOM Task Order No. 37

AECOM has provided a proposed scope of work for engineering design services as described in the attached Task Order No. 37 for your consideration in the amount of \$262,300. These tasks are also itemized on the attached Project Schedule and Fee Estimate. The tasks include costs for: Preliminary Design Phase, Design Phase, and Bid Phase services. The Task Order also outlines future Construction Phase Engineering Services for planning purposes. If the requested FY 10-11 budget adjustment is approved, Task Order No. 37 will be paid from FY 10-11 for the Preliminary Design Phase and part of the Design Phase services, and from FY 11-12 funds for the balance of the Design Phase and the Bid Phase services. Staff requests approval of AECOM's Task Order No. 37, and authorization to proceed with preliminary designs.

Project Schedule

The Modified Upper Reach Reliability Project contains elements of pipeline inspections and possible pipeline replacements. It is necessary to first inspect the pipeline to determine its condition prior to proceeding with any of the pipeline replacement work. This will require the SCC to be shut down for up to a week in order to carry out the internal inspections. Because we are going into the high demand season, a shutdown of any length is not possible at this time. Therefore, the proposed schedule has been revised so that physical pipeline inspections will be carried out from December 2011 – January 2012. This should also provide adequate time for notification of the shutdowns to the Goleta Water District customers. Any warranted pipeline replacement or rehabilitation work on the SCC will be carried out from November 2012 –

February 2013. The South Portal Structure replacement and Glen Anne Turnout work will take place during 2012.

Bid Options

Because the extent of pipeline replacement work cannot be determined until after the pipe is inspected, bid specifications for that component of the Modified Project must also be deferred. There are currently two possible bid options under consideration, although others may be identified.

Option A: Bid all work except the SCC rehabilitations, and issue a separate bid package for any necessary SCC rehabilitation after the winter pipeline inspections. This may result in hiring two different contractors and potentially add additional cost for preparation of a second bid package

Option B: Bid all work per the attached schedule, including replacement of approximately 1,000 feet of pipe immediately down pipeline of the South Portal Structure where there is a high probability of corrosion due to high levels of hydrogen sulfide gas. As a first order of work included in the bid specs, the contractor would be required to inspect the SCC from the south portal to the CDMWTP to confirm its condition and identify the sections of pipe most vulnerable to failure. Alternatively, the pipeline inspection could be carried out by a different contractor. Any necessary pipeline replacement or rehabilitation identified from the inspection could either be tasked as a change order to the approved contract, or be bid separately.

Bid options will be discussed with the Operating Committee to develop a recommendation to the Board.

Respectfully submitted,

Kate Rees
General Manager

Attachments

kr.comb/admin/ bd memos/042511_mod upr reach proj.mmo

ITEM # 9
PAGE 3



AECOM
 5851 Thille Street, #201, Ventura, CA 93003
 T 805.644.9704 F 805.642.8277 www.aecom.com

MODIFIED UPPER REACH
 RELIABILITY PROJECT
 "PLAN B"

Memorandum

(NOTED CHANGES BY KATE REES)

Date: February 14, 2011
 To: Jim Colton, Kate Rees
 From: Glen Hille
 Subject: Considerations if Second Barrel is Deferred

Distribution: Andy Romer

The following initial list of mitigation measures to reduce the risk of failure of the SCC have been compiled for COMB's consideration in the event the Upper Reach Reliability Pipeline project is delayed.

	Engineer's Opinion of Probable Cost
♦ Replace three blowoff nozzles and coat interior and exterior steel surfaces adjacent to these appurtenances.	\$ 50,000
♦ Evaluate "fire storm" and flood protection options for blowoff and air valves.	\$ 10,000
♦ Replace two air release (AV) valve nozzles. Extend (AV) vents to 3'0" AFG. Coat exterior and interior steel surfaces adjacent to these appurtenances.	\$ 25,000
♦ South Portal Transition Structure replacement	
• Structure and Gates	\$ 400,000
• 84" pipe (inlet)	\$ 300,000
• Linings / Coatings	\$ 75,000
• 24" pipe (overflow)	\$ 50,000
• Environmental Monitoring	\$ 25,000
♦ Replace under-reinforced SCC pipeline sections	
• Testing and Inspection	\$ 100,000
• 2500 feet 48" pipe up to 1500 feet	\$ 2,500,000 1,500,000
• Environmental Studies	\$ -50,000
• Revegetation	\$ 100,000
♦ Environmental Monitoring	\$ 50,000 75,000
♦ Right-of-Way and Pipeline Markers	\$ 25,000
♦ Glen Annie Turnout	
• Weir Modification	\$ 100,000
• Concrete Repairs / Coating	\$ 50,000
• Goleta West Meters	\$ 200,000
♦ Interruptions in SCC Service	\$ 30,000
♦ Engineering 15%	\$ 575,000
♦ Contingency 15%	\$ 575,000
Total	\$ 5,290,000 4,240,000

* To be verified with further study. Concerns were identified in the 2003 reliability study and additional analysis was recommended. The 2008 Reliability Study included the recommended additional analysis and did not recommend replacement of the subject pipeline sections with the understanding that the Upper Reach Reliability Pipeline project would be implemented.

KR



AECOM
 5851 Thille Street
 Suite 201
 Ventura, CA 93003
 www.aecom.com

805 644 9704 tel
 805 642 8277 fax

April 15, 2011

Mr. Jim Colton
Cachuma Operation & Maintenance Board
 3301 Laurel Canyon Road
 Santa Barbara, CA 93105

Dear Jim:

**Subject: Cachuma Operation & Maintenance Board
 Design Services for Modified South Coast Conduit Upper Reach
 Reliability Pipeline Project
 Task Order No. 37**

Transmitted herewith are three copies of the Task Order No. 37 dated April 15, 2011, and an anticipated project schedule for engineering services for the Modified South Coast Conduit Upper Reach Reliability Pipeline Project. It is our understanding that these services will be completed as an amendment under our Engineering Services Agreement for Investigation and Engineering Study for South Coast Conduit (SDD), dated February 22, 1999. In summary, this Task Order provides for design services for the following:

- ❖ Rehabilitation of three blowoffs at Stations 12+62, 23+97 and 30+61
- ❖ Rehabilitation of three air valves
- ❖ Rehabilitation of up to two sections of the SCC, not exceeding 1,500 feet total length
- ❖ Replacement of the Glen Annie Weir
- ❖ Replacement of the Goleta West Meters
- ❖ Replacement of the South Portal Transition Structure and upstream connecting pipeline

After your review of the attached Scope of Work and concurrence, please sign all three copies where indicated below and return two copies to our office. We sincerely appreciate the continued opportunity to provide engineering services to COMB. Please call if clarification is required.

Sincerely,

AECOM

Glen M. Hille, PE
 Vice President West Region

Approved by:
 Cachuma Operations and Maintenance Board

 Kate Rees
 General Manager

 Date

Scope of Work – Task Order No. 37

Cachuma Operation and Maintenance Board

Design Services for Modified South Coast Conduit

Upper Reach Reliability Pipeline Project

April 15, 2011
Page 1 of 7

Background and Overview

The Cachuma Operation and Maintenance Board (COMB) operates the South Coast Conduit (SCC) from the Lake Cachuma north portal to the Carpinteria Reservoir. In 2002, COMB retained Boyle Engineering Corporation (Boyle) to perform a Reliability and Alternatives Study for the Upper Goleta Reach of the SCC (south portal of the Tecolote Tunnel to the Corona Del Mar Water Treatment Plant (CDMWTP)). In that report, one of the recommendations was to construct a second (redundant) pipeline for that reach in order to increase system reliability.

In 2005 to 2010, COMB retained Boyle to provide the engineering services for the design and bid phases of the project. Due to funding constraints, COMB has deferred the project. COMB has recently requested AECOM to provide engineering services for the design and bid phase services for the following facilities which are located on or adjacent to the SCC downstream of the Tecolote Tunnel and upstream of the CDMWTP:

- ◆ Rehabilitation of three blowoffs at Stations 12+62, 23+97 and 30+61
- ◆ Rehabilitation of three air valves
- ◆ Rehabilitation of up to two sections of the SCC, not exceeding 1,500 feet total length
- ◆ Replacement of the Glen Annie Weir
- ◆ Replacement of the Goleta West Meters
- ◆ Replacement of the South Portal Transition Structure and upstream connecting pipeline

The design of these project components will be packaged into one prime public works project anticipated to be less than \$5.0M.

Part 1 - Preliminary Design Phase

Task 37100 – Concept Design Refinement

Task 37110 – Kickoff Meeting. AECOM will prepare for and attend a kickoff meeting to discuss the project specifics with COMB key staff members.

Task 37120 – Preliminary Analysis. AECOM will update the alternatives and structure concepts. The hydraulic gradeline requirements for the SCC at the Goleta West Conduit and CDMWTP turnouts will be reconfirmed.

AECOM will review the existing easement documentation and confirm, on the basis of those documents, the locations of the proposed project components relative to the easements.

AECOM will coordinate the proposed modifications to the Glen Annie Turnout and Goleta West Meters with Goleta Water District Staff. It is anticipated that up to two (2) meetings will be required with AECOM, COMB and GWD staff.

AECOM will retain a subconsultant to provide base mapping for the Glen Annie Turnout area (up to 100 ft upstream and 500 ft downstream).

ITEM # 9c
PAGE 2

AECOM will conduct reconnaissance level field review of the project related facilities and sites. The review will be limited to facilities and conditions exposed to view at ground level. The review will concentrate on factors pertinent for determining: 1) existing facility functional (hydraulic) relations to the subject project facilities; and 2) visible site conditions that could affect the proposed pipeline alignment.

AECOM will conduct a preliminary analysis review meeting to discuss the above analysis and confirm COMB's limitation relative to budgets and schedules.

Task 37130 – Concept Design. AECOM will compile a concept design report which is described by the following outline:

- ◆ Background Alternatives and Project Selection (one page of text)
- ◆ BO/ARVs concept design (one page with text and layout)
- ◆ Glen Annie Turnout concept design (one page with text and layout)
- ◆ Goleta West Meter concept design (one page with text and layout)
- ◆ South Portal transition structures concept design (up to four drawings)
- ◆ SCC Rehabilitation – discussion of approach for investigation and optional bid item (two pages of text and layouts)
- ◆ Environmental – anticipated issues
- ◆ Permitting – anticipated issues
- ◆ Right-of-way/Easements – anticipated issues
- ◆ Opinion of Probable Cost (up to 40 components)
- ◆ Anticipated Schedule (up to 40 tasks)

Task 37140 – Project Management – Concept Design. AECOM will attend up to four (4) coordination meetings with COMB and other COMB project consultants to discuss the project development. AECOM will provide monthly invoicing identifying the status of the project.

Part 2 - Design Phase

Task 37200 – Design Phase

Task 37210 – 65% Design. AECOM will provide 65% design drawings and outline of technical specifications for the following project components:

- ◆ BO (1) drawings
- ◆ ARV (1) drawing
- ◆ Rehabilitation or replacement of 1500 ft (two sections)¹ of the SCC (6) drawings
- ◆ Glen Annie TO (2) drawings
- ◆ Goleta West Meters (2) drawings
- ◆ SP Transition Structure²

¹ One section will be a 1000± ft section immediately downstream of the South Portal transition structure.

² Modified drawings from previous design:

G-1 – G-4	D-1	D-9	D-19 – D-21
C-10	D-4	D-10 – D-17	E-1

Task 37220 – Design Review. AECOM will meet with COMB to discuss the 65% design submittal.

Task 37230 – Final Design and Contract Document Preparation. AECOM will complete the design of the project components identified in Task 2100 and compile the contract documents as outlined below:

- ◆ General Conditions (with optional bid item for replacement of sections of the SCC)
- ◆ Specifications (including coordination of SCC inspection)
- ◆ Design Drawings 100%
- ◆ Appendices
 - A Reference Drawings
 - B Permits
 - C Geotechnical Study SCC Upper Reach Second Barrel Pipeline Project
 - D Final Environmental Impact Statement/Environmental Report
 - E Easements
 - F Revegetation Plan
 - G Special Status Species Protection Plan

Task 37240 – Engineer’s Opinion of Probable Construction Cost. AECOM will compile an Engineer’s Opinion of Probable Construction Cost for the project components.

Task 37250 – Project Management for Final Design. AECOM will attend up to four (4) coordination meetings with COMB and COMB other project consultants to discuss the project development. AECOM will provide monthly invoicing identifying the status of the project.

Part 3 - Bid Phase Service

Task 37300 – Contractor Prequalification Package

Boyle will assist COMB in conducting, coordinating, and performing a prequalifications and selection process for the pipeline contractor.

The Department of Industrial Relations has developed a model and relevant criteria that can be utilized by COMB. It is accompanied by a publication explaining how to score the questionnaire. Contractors who receive an acceptable score will be deemed responsible, prequalified bidders. The prequalification selection process will include the following tasks:

Task 37310 – Meet and Discuss Prequalifications Processes. Meet and discuss prequalifications processes and selection criteria with COMB representatives/personnel.

Task 37320 – Assist in Identifying Eligible Contractors. By contacting local cities, counties, consultants, contractors and/or special districts, assist COMB in identifying a list of contractors that have prior experience with similar projects. Contact the contractors identified to advertise COMB’s project.

Task 37330 – Draft Prequalifications Questionnaire and Advertisement. Utilizing the Department of Industrial Relations model as a format, Boyle will draft a prequalifications questionnaire and advertisement for COMB and USBR review and approval. Meet to discuss COMB comments. Finalize prequalifications advertisement and prequalifications questionnaire. Submit one reproducible copy for COMB’s reproduction and distribution.

Task 37340 – Facilitate Review of Prequalifications Submittals. Facilitate COMB's review of prequalifications submittals received from interested contractors.

Task 37350 – Facilitate Interviews and Evaluation Process. Facilitate COMB's interviews and evaluation process to define a list of qualified contractors.

Task 37360 – Draft Notification Correspondence. Compile draft letters of notification for firms that responded.

Task 37370 – Orientation Meeting. Conduct an orientation meeting with selected firms. Identify project data to be provided by COMB to selected firms.

Task 37400 – Engineering Services During Bid Phase

Assist COMB during the bid phase of the project. It is assumed that one (1) construction contract will be implemented. AECOM will provide one set of mylar and one set of reproducible specifications for reproduction and distribution by COMB staff. AECOM will attend the preproposal meeting, bid opening, and compile up to three (3) addendums.

Part 4 - Construction Phase Engineering Services (Future Task Order)

- ❖ Construction Contract Administration
 - ◆ Conduct Meetings
 - ◆ Review contractors construction schedule
 - ◆ Maintain contract files
 - ◆ Review contractor's monthly progress payment requests
 - ◆ Punch lists/final project review with COMB/submit recommendation for project acceptance
 - ◆ Program Management/quality control
 - ◆ Workshops
- ❖ Submittal Processing Review and Supplemental Engineering
 - ◆ Receive and Review up to 8 sets of submittals and O&M Manuals
 - ◆ Supplemental Engineering Services
- ❖ Change Order Management and Requests for Information (RFIs)
 - ◆ Investigate proposed change orders and RFIs
 - Prepare change order estimates
 - Coordinate responses to RFIs
 - Evaluate the Contractor's price proposals
 - Maintain a change order log
- ❖ Technical Support for SCC Condition Investigation Conducted by COMB. AECOM will provide up to 16 manhours of technical support during the investigation of the SCC condition assessments conducted by others.
- ❖ Permit Coordination
- ❖ Construction Observations

- ❖ Record Drawings
- ❖ Easement and Right-of-Way Coordination
- ❖ Materials Testing Services and Geotechnical
 - ◆ Construction Drawings and Specification Review, Preconstruction Meetings
 - ◆ Construction Materials Testing
 - Laboratory testing of proposed construction materials
 - In-place density testing of pipe/trench zone and restoration grading activities
 - Sampling and testing of concrete materials
 - Geotechnical observation as requested
 - ◆ Report Preparation
- ❖ Labor Compliance Services
 - ◆ Pre-Job Conference
 - ◆ Monthly Audit of Contractor Certified Payroll
 - ◆ Monthly On-Site Interview
 - ◆ Violation Enforcement and Recommendations
 - ◆ Annual Reporting to the Department of Industrial Relations (DIR)

Schedule

It is anticipated that the Scope of Services (Excluding Construction Phase Services) associated with this proposal can be completed in 180 calendar days from the notice to proceed. The attached preliminary schedule provides the sequence and duration anticipated. Authorization is anticipated within seven (7) days to maintain the schedule.

Fee Estimate

The estimated engineering effort and estimated fee are shown on the attached Fee Estimate.

Supplemental Conditions

Construction Safety

COMB agrees that in accordance with generally accepted construction practices, the construction contractor will be required to assume sole and complete responsibility for job site conditions during the course of construction of the Project, including safety of all persons and property, and that this requirement shall be made to apply continuously and not be limited to normal working hours. AECOM shall not have control over or charge of, and shall not be responsible for, construction means, methods, techniques, sequences or procedures, as these are solely the responsibility of the construction contractor. AECOM shall not have the authority to stop or reject the work of the construction contractor.

Contractor Indemnification/Additional Insured

Client will require that any Contractor performing work in connection with the project for which AECOM is providing professional services, hold harmless, indemnify and defend Client, AECOM, their consultants, and each of their directors, officers, agents and employees from any and all liability, claims, losses, damage and costs, including attorneys' fees, arising out of or alleged to arise from the Contractor's performance of the work

described in the construction contract documents, but not including liability that may be due to the sole negligence of Client, AECOM, their consultants, or their directors, officers, agents and employees.

Client will require the Contractor to provide workers' compensation and commercial general liability insurance, including completed operations and contractual liability, with the latter coverage sufficient to insure the Contractor's indemnity, as above required; and such insurance shall include Client, AECOM, their consultants, and each of their directors, officers, agents and employees as additional insureds.

Hazardous Materials

In providing its services hereunder, neither AECOM nor its subconsultants shall be responsible for identification, handling, containment, abatement, or in any other respect, for any asbestos or hazardous material if such is present in connection with the project. In the event that CLIENT becomes aware of the presence of asbestos or hazardous material at the jobsite, CLIENT shall be responsible for complying with all applicable federal and state rules and regulations, and shall immediately notify AECOM, who shall then be entitled to cease any of its services that may be affected by such presence, without any liability to AECOM or its subconsultants arising there from.

Cost Estimate

AECOM has no control over the cost of labor, materials, equipment or services furnished by others or over Contractor's methods of determining prices, or other competitive bidding or market conditions, practices or omissions on the site. Any cost estimates provided by the Consultant will be made on the basis of his experience and judgment. Estimates of probable construction costs may vary from actual construction costs.

Re-Use of Documents

Documents, drawings, specifications, and electronic information/data, including computer aided drafting and design ("CADD"), prepared by CONSULTANT pursuant to this agreement are not intended or represented to be suitable for reuse by CLIENT or others on extensions of the Project or on any other project. Any use of completed documents for other projects and any use of incomplete documents without specific written authorization from CONSULTANT will be at CLIENT's sole risk and without liability to CONSULTANT.

Right to Rely

Consistent with the professional standard of care and unless specifically provided herein, AECOM shall be entitled to rely upon the accuracy of data and information provided by the COMB or others without independent review or evaluation.

Assumptions

In preparing this proposal, the following assumptions were made:

- COMB will pay all permit fees and prepare permit applications.
- CEQA process is by others.
- Permit process is by others.
- Environmental Mitigation is by others.
- ROW and Easements compilation is by others.
- Except for base mapping adjacent to Glen Annie turnout, survey services is by others.
- Coordination and Management of Proposition 50 funding is by others.
- No additional geotechnical services are anticipated.
- The existing SCC can be shut down for repairs and rehabilitation. Design of linestops and bypasses is not included within the estimated level of effort.
- Proposal is valid for sixty days.

Cachuma Scope of Work - Task Order No. 37 Modified South Cost Conduit (SCC) Upper Reach Reliability Pipeline Project
Fee Estimate

Task	Description	AECOM Level of Effort		Sub-Consultant
		MH	(\$)	
Part 1 - Preliminary Design				
37100	Concept Design Refinement			
37110	Kickoff Meeting	8	\$ 1,400	
37120	Preliminary Analysis	8	\$ 1,400	\$ 3,000
37130	Concept Design Letter Report - 30% Design			
	Background Alternatives and Project Selection	2	\$ 300	
	BO/ARVs concept design	2	\$ 300	
	Glen Annie Turnout concept design	8	\$ 1,400	
	Goleta West Meter concept design	8	\$ 1,400	
	South Portal transition structures concept design	4	\$ 700	
	SCC Rehabilitation - discussion of potential issues	20	\$ 3,500	
	Environmental - anticipated issues	4	\$ 700	
	Permitting - anticipated issues	4	\$ 700	
	Right-of-Way / Easements - anticipated issues	4	\$ 700	
	Opinion of Probable Cost	12	\$ 2,100	
	Anticipated Schedule	8	\$ 1,400	
37140	QC / PM - Concept Design	68	\$ 11,800	
	Subtotal Part 1	160	\$ 27,800	
Part 2 - Design Phase				
37200	Design Phase			
37210	65% Design			
	BO (1) drawings	24	\$ 4,200	
	ARV (1) drawing	24	\$ 4,200	
	Pipe Rehabilitation (6) drawings	180	\$ 31,200	
	Glen Annie TO (3) drawings	80	\$ 13,900	
	Goleta West Meters (2) civil drawings and 2 electrical drawings	96	\$ 16,700	
	SP Transition Structure ¹	64	\$ 11,100	
37220	Design Review	16	\$ 2,900	
37230	Final Design and Contract Document Preparation			
	General Conditions	48	\$ 8,300	
	Specifications	80	\$ 13,900	
	Design Drawings 100% (24 drawings)	320	\$ 55,600	
	Appendices			
	A Reference Drawings	1	\$ 200	
	B Permits	8	\$ 1,400	
	C Geotechnical Study SCC Upper Reach Second Barrel Pipeline Project ²	1	\$ 200	
	D Final Environmental Impact Statement/Environmental Report ²	8	\$ 1,400	
	E Easements ²	8	\$ 1,400	
	F Revegetation Plan ²	8	\$ 1,400	
	G Special Status Species Protection Plan ³	8	\$ 1,400	
37240	Opinion of Probable Cost	40	\$ 6,900	
37250	Project Management	96	\$ 16,700	
	Subtotal Part 2	1110	\$ 192,900	
Part 3 - Bid Phase Service				
37300	Prequalifications	120	\$ 20,800	
37400	Bid Phase Engineering Services	120	\$ 20,800	
	Subtotal Part 3	240	\$ 41,600	
Part 4 - Construction Phase Engineering Services				
	Construction Contract Administration			
	Conduct Meetings		TBD	
	Review contractors construction schedule		TBD	
	Maintain contract files		TBD	
	Review contractor's monthly progress payment requests		TBD	
	Punch lists / final project review th Comb / submit recommendation for project acceptance		TBD	
	Program Management / quality control		TBD	
	Workshops		TBD	
	Submittal Processing Review and Supplemental Engineering			
	Receive and Review up to ___ set of submittals and O&M Manuals		TBD	
	Supplemental Engineering Services		TBD	
	Change Order Management and Requests for Information (RFIs)			
	Investigate proposed change orders and RFIs		TBD	
	Prepare change order estimates		TBD	
	Coordinate responses to RFIs		TBD	
	Evaluate the Contractor's price proposals		TBD	
	Maintain a change order log		TBD	
	Technical Support for SCC Condition Investigation Conducted by COMB		TBD	
	Permit Coordination		TBD	
	Construction Observations		TBD	
	Record Drawings		TBD	
	Easement and Right-of-Way Coordination		TBD	
	Materials Testing Services and Geotechnical			
	Construction Drawings and Specification Review, Preconstruction Meetings		TBD	
	Construction Materials Testing		TBD	
	Laboratory testing of proposed construction materials		TBD	
	In-place density testing of pipe/trench zone and restoration grading activities		TBD	
	Sampling and testing of concrete materials		TBD	
	Geotechnical Observation as requested		TBD	
	Report Preparation		TBD	
	Labor Compliance Services			
	Pre-Job Conference		TBD	
	Monthly Audit of Contractor Certified Payroll		TBD	
	Monthly On-Site Interview		TBD	
	Violation Enforcement and Recommendations		TBD	
	Annual Reporting to the Department of Industrial Relations (DIR)		TBD	
	Assumptions			
	Pipeline Inspection by others - coordinate		TBD	
	Environmental by others		TBD	
	Environmental Mitigation Monitoring by others		TBD	
	Permitting by others		TBD	
	ROW/Easements by others		TBD	
	Surveys by others		TBD	
	Coordination and Management of Proposition 50 by others		TBD	
	No additional geotechnical services are anticipated		TBD	
	Total	1510	\$ 262,300	\$ 3,000

It is anticipated that an engineering fee of \$265,300 will be required to accomplish the above-referenced engineering tasks based on an average of \$160 per MH, and 8.5% for other direct costs. Compensation will be on a time and materials basis consistent with the 2011 Fee Schedule attached and our Engineering Services Agreement dated February 22, 1999.

1) Modified drawings from previous design:
G-1 - G-4 D-4 D-10 - D-17
C-10 D-9 D-19 - D-21
D-1 E-1

2) These documents are to be compiled by others. AECOM services are limited to coordination of these documents for the development of the contract documents.

AECOM
FEE SCHEDULE FOR PROFESSIONAL SERVICES
Effective January 1, 2011

Engineers, Planners, Architects, Scientists:

Student Assistant	\$ 79.00 per hour
Assistant I	\$ 97.00 per hour
Assistant II	\$ 110.00 per hour
Associate	\$ 130.00 per hour
Senior I	\$ 155.00 per hour
Senior II	\$ 177.00 per hour
Principal	\$ 215.00 per hour
Company Officer	\$ 232.00 per hour
Special Consultant	\$ 180.00 per hour

Construction Administration Personnel:

Resident Project Representative	\$ 107.00 per hour
Senior Resident Project Representative	\$ 125.00 per hour
Resident Engineer	\$ 153.00 per hour
Construction Services Manager	\$ 202.00 per hour

Technical Support Staff:

Clerical/General Office	\$ 69.00 per hour
Administrative Specialist	\$ 81.00 per hour
Drafter/CADD Technician	\$ 72.00 per hour
Assistant CADD Operator	\$ 84.00 per hour
Designer/CADD Operator	\$ 95.00 per hour
Senior Designer/Design CADD Operator	\$ 110.00 per hour
Design/CADD Supervisor	\$ 123.00 per hour

General Project Expenses ^{1/}

8.5% of Labor

Direct Project Expenses

Other Reproduction (8 1/2 x11/11x17 Color)	\$1.15/1.50 per page
Plan Sheet Printing - In House Bond/Vellum/Mylar	\$3.00/4.00/7.00 per sheet
Subcontracted Services/Reproduction	Cost + 15%
Subcontracted or Subconsultant Services	Cost + 15%
Auto Mileage for Construction Phase Services	\$0.60 per mile
Travel & Subsistence (other than mileage)	Cost
Miscellaneous Materials	Cost + 15%

If authorized by the Client, an overtime premium multiplier of 1.5 may be applied to the billing rate of hourly personnel who work overtime in order to meet a deadline which cannot be met during normal hours.

Applicable sales tax, if any, will be added to these rates. Invoices will be rendered monthly. Payment is due upon presentation. A late payment finance charge of 1.5% per month (but not exceeding the maximum rate allowable by law) will be applied to any unpaid balance commencing 30 days after the date of the original invoice.

Fee schedule is subject to change annually.

^{1/} *Includes mail, telephone, fax, office photo copies, personal computers and mileage (except as noted).*

**Preliminary Project Schedule (20% Design)
Modified SCC Upper Reach Reliability Pipeline**

April 2011

Description	2011				2012				2013												
	Apr	May	Jun	Jul	Aug	Sep	Oct	Nov	Dec	Jan	Feb	Mar	Apr	May	Jun	Jul	Aug	Sep	Oct	Nov	Dec
Part 1 - Preliminary Design																					
Kickoff Meeting																					
Preliminary Analysis																					
Concept Design Report (30%)																					
SCC Inspection (by others)																					
QC / PM - Concept Design																					
Part 2 - Design Phase																					
65% Design																					
Design Review																					
Final Design and Contract Document Preparation																					
Opinion of Probable Cost																					
Project Management																					
Part 3 - Bid Phase Service																					
Prequalifications																					
Bid Phase Engineering																					
Part 4 - Construction Phase Engineering Services																					
SCC Rehabilitation																					
BO and ARV Rehabilitation																					
Glen Annie / Goleta West Meter Rehabilitation																					
South Portal Transition Structure																					
Construction Phase Engineering Environmental Monitoring																					
Asbuflils																					

Estimated Cash Flow
 Engineering and Construction
 (excludes permitting, environmental, ROW)

\$	115,000	\$	150,000	\$	230,000	\$	650,000	\$	650,000	\$	1,000,000	\$	1,260,000	\$	1,450,000
----	---------	----	---------	----	---------	----	---------	----	---------	----	-----------	----	-----------	----	-----------

ITEM # 9c
 PAGE 10

**Modified SCC Upper Reach Reliability Pipeline
Preliminary Project Schedule (20% Design)
April 2011**

Description	2011					2012					2013											
	Apr	May	Jun	Jul	Aug	Sep	Oct	Nov	Dec	Jan	Feb	Mar	Apr	May	Jun	Jul	Aug	Sep	Oct	Nov	Dec	
Part 1 - Preliminary Design																						
Kickoff Meeting																						
Preliminary Analysis																						
Concept Design Report (30%)																						
Environmental Compliance																						
Permit Revisions																						
Easement/ROW Investigation																						
Part 2 - Design Phase																						
65% Design																						
Update Revegetation Plan																						
Design Review																						
Final Design and Contract Document Preparation																						
Opinion of Probable Cost																						
Finalize all Permits																						
Finalize Environmental																						
RFP for Construction Management Services																						
Part 3 - Bid Phase Service																						
Prequalification																						
Bid Phase																						
Negotiate Construction Contract																						
Negotiate CM Contract																						
Part 4 - Construction Phase																						
SCC Rehabilitation																						
Blow Off and Air Valve Rehab																						
SCC Inspection (N.P. to CDMWTP)																						
Glen Annie/Goleta West Meter Rehabilitation																						
South Portal Transition Structure																						
South Portal Recordation Mitigation																						
Construction Management/Inspection																						
Construction Environmental Monitoring																						
Asbuilts																						
Estimated Cash Flow																						
Engineering and Construction	\$ 65,000	\$ 65,000	\$ 150,000	\$ 255,000	\$ 375,000	\$ 200,000	\$ 1,000,000	\$ 2,010,000	\$ 145,000	\$ 4,200,000												
Fiscal Year costs	\$ 65,000	\$ 980,000	\$ 3,155,000	\$ 4,200,000																		

MODIFIED UPPER REACH RELIABILITY PROJECT

IDENTIFIED COMPONENTS

Preliminary Design

Preliminary Analysis	AECOM
Concept Design Report	AECOM
Environmental Compliance	
Prepare Addendum (EIR/EIS)	Entrix
Categorical Exemption for O&M	Entrix
Permit Revisions	
Section 404- ACOE	COMB/Entrix
Section 7- USFWS/NMFS	COMB/Entrix
Section 401- RWQCB	COMB/Entrix
Streambed Alteration Agreement- CDFG	COMB/Entrix
Section 106- Reclamation	COMB/Entrix
MP620- Reclamation	COMB/Entrix
Easement/ROW Investigation	COMB/AECOM

Design Phase

Prepare 65% designs	AECOM
Re-vegetation Plan Update	COMB/Entrix
Prepare 100% designs and Spec's	AECOM
Engineer's final estimate	AECOM
Finalize all permits	COMB/Entrix
Finalize Environmental	COMB/Entrix
RFP for Const Phase Services	COMB

Bid Project

Prequalification's	COMB/AECOM
Bid the project	COMB/AECOM
Negotiate and finalize Const contract	COMB
Negotiate and finalize CM contract	COMB

Construction

SCC Rehabilitation	Contractor
BO and ARV Rehabilitation	Contractor
SCC Inspection	TBD
Glen Annie/G.W. Mods	Contractor
South Portal Structure	Contractor
South Portal Recordation Mitigation	Applied Earthworks
Construction Management/Inspection	TBD
Construction Environmental Monitoring	COMB/Tribe/Permit
Re-vegetation and Mitigation Monitoring	COMB/Entrix

**Annual Monitoring Report for
Lauro Retention Basin Enlargement
Santa Barbara County,
California
Site Revegetation and Compensation Plan**

March 2011

Prepared by



**Cachuma Operation and
Maintenance Board
3301 Laurel Canyon Road
Santa Barbara, California 93105**

ITEM # 10a
PAGE 1

ITEM # 10a
PAGE 2

Table of Contents

Introduction	1
Monitoring	1
Monitoring results.....	1
Summary	6

List of Figures

1	Project Location	3
2	Photo Points	4

Appendices

- A Site Photos
- B 2010 Status Summary and Results for the Oak Tree and Honeysuckle Restoration Program

This page intentionally left blank.

Introduction

This report summarizes the results of the second year of revegetation monitoring for a mitigation project for Lauro Retention Basin Enlargement Project (Figure 1). The Site Revegetation and Compensation Plan (2008) for the project provided the methodology for: (1) revegetation of areas disturbed during enlargement of the existing retention basin that captures runoff from Lauro Canyon Creek; and (2) compensation planting to offset permanent removal of sensitive plant species, individual oak trees, and marsh vegetation.

Revegetation and compensation for the Lauro Retention Basin Enlargement Project consists of:

- Reseeding and slope stabilization of areas.
- Establishment of at least 80 coast live oak trees that meet age, size and health criteria.
- Establishment of at least 50 honeysuckle that are at least 3 years old.
- Establishment of 0.19 acres of native marsh vegetation along the shoreline of Lauro Reservoir at designated locations.

The Revegetation Plan specified a mix of native grassland species for the slopes of the debris basin that would not typically be inundated and a mix of non-invasive, non-native grassland species for the slopes of the debris basing that would likely be periodically inundated. However, very little native seed was available in the year prior to construction, so the two seed mixes were very similar with the exception that the mix on the upper slopes (i.e., slopes not inundated) contained arroyo lupine (*Lupinus succulentus*), a native species.

Monitoring

Previous monitoring efforts included various site visits conducted by SAIC staff biologists over the summer and fall of 2009 to check on the status of the revegetation, slope stabilization, and to document presence of invasive, non-native species. A detailed survey of all treatment areas (i.e., areas revegetated as part of the project) was conducted on February 11, 2010. All portions of the treatment areas were surveyed for presences of invasive, non-native species. In addition, the health/extent of tule plantings were examined. An updated subset of the representative photographs is included as Appendix A of this report.

Monitoring Results

Lauro Basin Slopes

The slopes of Lauro Basin support a mixture of native and non-native plant species. Patches of non-native grasses and herbs including cheeseweed (*Malva parviflora*), bur clover (*Medicago polymorpha*), and wild oats (*Avena fatua*) are present in some areas. Scattered native plants were also observed including Mexican elderberry (*Sambucus mexicana*), canyon sunflower (*Venegasia carpesioides*) and arroyo lupine. Invasive non-native plants were found in patches and included the following species: Mediterranean mustard (*Hirschfeldia incana*), castor bean (*Ricinus communis*), smilo grass (*Piptatherum miliaceum*), tree tobacco (*Nicotiana glauca*), poison hemlock (*Conium maculatum*), and echium (*Echium* sp.). All non-native species observed were present at the site prior to construction of the debris basin. COMB is actively removing invasive non-native species from the treatment area and will continue to do so for the

duration of the monitoring period. Incidental spraying for maintenance purposes around Lauro Basin slopes will require increased training and monitoring for 2010-2011, and is currently being implemented. Any run-off and turbidity from the 2010-2011 rainy season is effectively being channeled and filtered by the Lauro Retention Sediment Basin.



T:\BIOLOG YBIO_Lauro-Basin\Projects\BIO_Lauro-Basin-PhotoPoints.mxd

Figure 2. Photo Points.

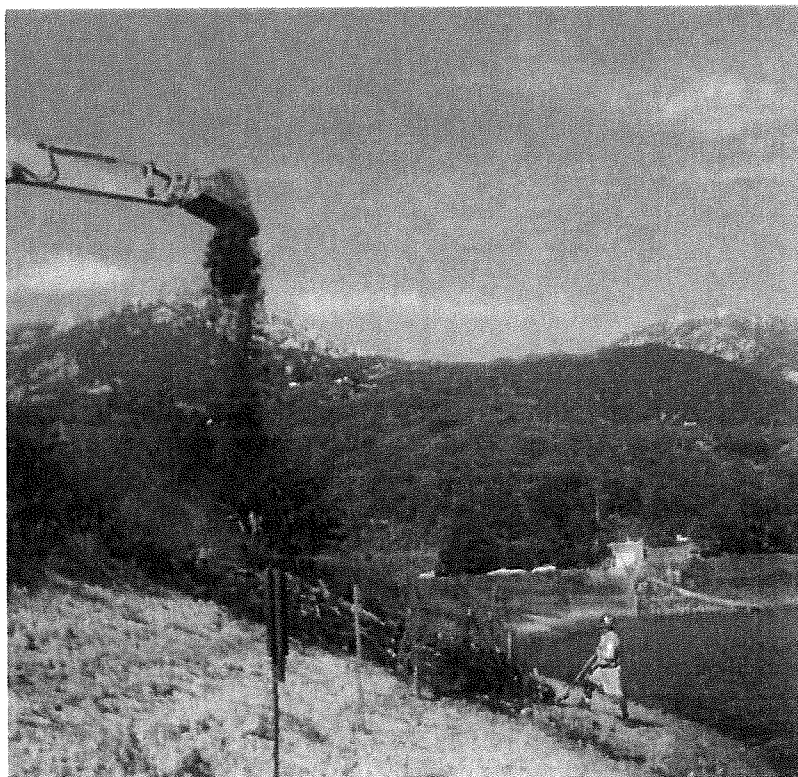
Honeysuckle and Coast Live Oak Mitigation

COMB has contracted the services of Melinda Fournier, Revegetation Specialist, for installation and maintenance efforts for the revegetation and mitigation requirements in the SAIC Site Revegetation and Compensation Plan for the project. The mitigation criteria for the oak tree and honeysuckle revegetation plan was met and exceeded during 2010, with 95 tree cages possessing trees for the Coast Live Oak Tree Replacement Program and 61 healthy plants established for the Santa Barbara Honeysuckle Replacement Project. Please see Appendix B, the 2010 Status Summary and Results for the Oak Tree and Honeysuckle Restoration Program for monitoring details.

Marsh Mitigation

Three marsh mitigation areas were planted with transplants of the rooted portions of marsh vegetation removed during construction of the debris basin dam. Large pieces of rooted marsh vegetation were removed and transported to locations along the reservoir slope. The transplants were placed when water at the reservoir was low and were watered by a water truck during dry weather.

Marsh vegetation successfully established in each of the three designated planting areas. These areas were not discernable from adjacent areas supporting mature marsh vegetation at the time of the survey in February 2010. No bare patches were observed and no non-native invasive species were present within the planted areas. As such, the marsh mitigation area has met the objective criteria outlined in the Site Revegetation and Compensation Plan (2008). The marsh mitigation areas will continue to be monitored until the performance period is complete.



Excavator placing rooted marsh material on slope of reservoir. The fencing was placed to prevent the material from being deposited too far down the slope of the reservoir to survive. 14 October 2008.

Summary

Revegetation of treatment areas at the Lauro Retention Basin Enlargement Project progressed well during 2010. Revegetation and weed control is ongoing on the disturbed slopes. Marsh vegetation has successfully established in the transplant locations and has met performance criteria. Oak and honeysuckle plantings have yielded high success rates and will continue to be maintained, monitored and reported on by Ms. Melinda Fournier and COMB until the performance period is complete.

This page intentionally left blank.

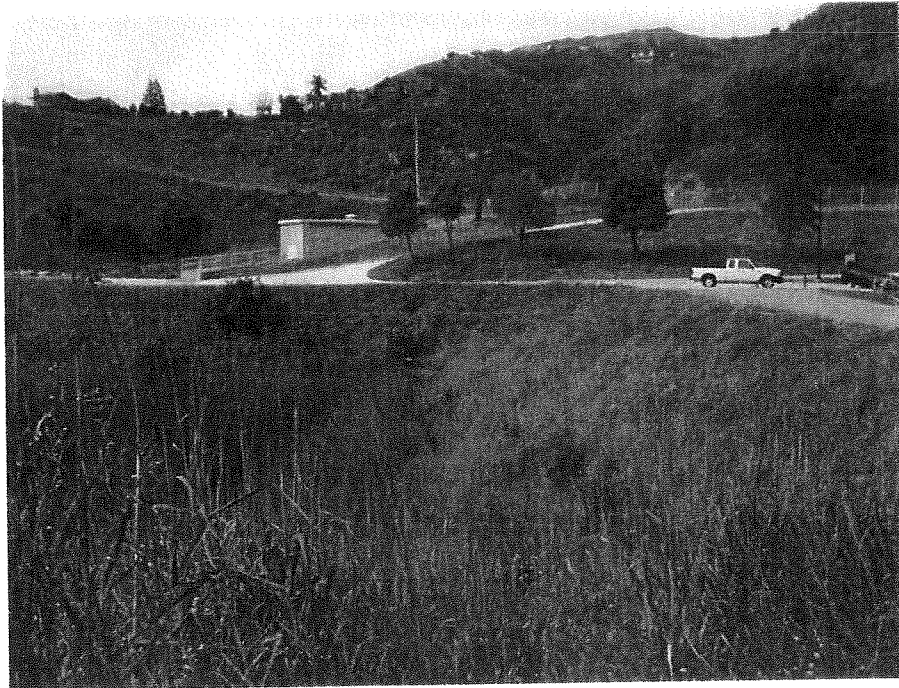
Appendix A
Site Photographs

ITEM # 10a

PAGE 12

This page intentionally left blank

ITEM # 10a
PAGE 13



Photopoint 4. Looking north along the slope of the debris basin dam. Marsh vegetation is well established at the margin of the reservoir.
15 March 2011



Photopoint 6. Looking along the slope of the reservoir at one of the marsh transplanting areas.
15 March 2011

Appendix B

2010 Status Summary and Results for the Oak Tree and Honeysuckle Restoration Program

OAK TREE AND HONEYSUCKLE RESTORATION PROGRAM
Related to the
LAURO RETENTION BASIN ENLARGEMENT PROJECT

End of Year 2010, Status Summary and Results

CACHUMA OPERATION & MAINTENANCE BOARD

January 1, 2011

The Lauro Basin Enlargement Project was completed in 2009 in an effort to enlarge the retention basin at the upper, northernmost edge of the Lauro Reservoir in Santa Barbara, California. The purpose of this retention basin is to collect storm run-off that may contain sediments, pollutants such as yard and household chemicals, and debris, and to minimize the amount of such materials from entering the water supply of the Lauro Reservoir.

SAIC developed the Site Revegetation and Compensation Plan (07/08) related to this construction effort which defines the revegetation requirements and methodologies necessary to complete the mitigation requirements related to losses incurred within the disturbed areas of construction. This Plan addresses three areas of mitigated effort necessary to offset or replace these impacts. Revegetation efforts will mitigate impacts or losses to Santa Barbara Honeysuckle, Coast Live Oaks, and marsh vegetation.

The intention of this restoration project is to implement the revegetation and mitigation requirements identified by SAIC relating to Santa Barbara Honeysuckle and Coast Live Oak tree replacement. Restoration requirements of these two species include no less than fifty, one gallon size Santa Barbara Honeysuckle plants and no less than 160 acorn, Coast Live Oak seed planting. This planting effort was conducted within, or close to the impacted areas of the Lauro Retention Basin Enlargement Project, and is intended to replace losses, or potential losses incurred during that construction effort.

It is written in the SAIC Site Revegetation and Compensation Plan, that project plants and trees will be protected, irrigated and maintained for a minimum of three years, and monitored for a total of five years, after planting. At the end of five years, specific Performance Criteria must be achieved relating to number of survivors, growth performance, duration of self-sufficiency, and several other criteria detailed in that Plan.

Quercus agrifolia, Coast Live Oak Tree Replacement Program

The Year 1 effort to this program included a seed collection effort (*Quercus agrifolia*) within the general geographic area surrounding the Lauro Creek watershed. This effort yielded 500 Coast Live Oak seed which were tested for viability, labeled and refrigerated for storage until planting activities begin in March, 2010. The first year of the restoration program will satisfy the recommended mitigation requirements detailed by SAIC in Section 3.2 of the Site

ITEM # 10a
PAGE 16

Revegetation and Compensation Plan (pp.10). In this effort, 300 acorn seeds were planted at 100 site locations on the upper slope areas bordering the Lauro Reservoir, containing three seeds per location. As specified in the plan, planting holes were dug and gopher baskets inserted into the holes. Three seeds per site were planted at 1" depth to moist soils near the end of the rainy season, in March, 2010. A 3" temporary soil berm, 2 to 3 feet in diameter, was constructed around each planting site to hold mulch and aid in surface watering applications of maintenance. Each seed planting site was constructed with a rigid tree protection basket over the planting area that will protect the new seedlings as they grow for the first three years. All tree sites were mulched with natural tree fodder, collected from below the canopy of existing Oak woodland in the surrounding area.



Each Oak tree planting site was hand watered weekly through the dry months of the first year using a water truck, pumps and hoses to individually access each tree site and saturate the watering basin with approximately 10 gallons of water per application. Tree cages were weeded regularly and attention was paid to the maintenance of proper mulch levels which aid in moisture retention and fertilization of new sprouts. Relatively mild temperatures persisted through most of the summer of 2010, which aided in the initial success of the seed germination and survival of tiny trees through the first summer.

Two Measuring and Monitoring Surveys were conducted during the first half of the Fiscal Year 2010/2011, the first on August 19 and the second on December 29. During these surveys, each tree cage was inspected and the number of surviving trees was recorded, each tree was measured for height and assessed for health. The results of those two monitoring events are documented in the following Table 1.

Table 1. Oak Tree Survey Results, August and December, 2010

Cage #	# Trees	RESULTS 8/19/10			RESULTS 12/29/10							
		Height Cond.	Height Cond.	Height Cond.	# Trees	Height Cond.	Height Cond.					
1	2	6" E	3" E		2	12"E	5" E					
2	1	5" E			1	12"E						
3	2	5" E	2" F+		2	7" E	4" E					
4	2	6" E	3" E		2	12" E	5" E					
5	4	1", 2"	2" E	5" E	4	6", 4"	4", 3"	All E				
6	2	6" E	3" E		2	6" E	4" E					
7	1	1" E			1	2" E						
8	1	6" E			1	6" E						
9	3	3" E	3" E	3" E	3	5" E	5" E	5" E				
10	1	6" G			1	6" E						
11	3	6" E	3" E	3" E	3	12"E	3" E	3" E				
12	1	3" E			1	3"						
13	0				0							
14	2	6" E	5" E		2	5" E	6" E					
15	2	6" E	2" E		2	6" E	2" E					
16	3	5" E	3" G	2" G+	3	5" F	3" F	2" F				
17	1	3" E			1	3" G						
18	1	6" E			2	6" E	3" E					
19	2	7" E	4" E		2	7" E	5" E					
20	2	3" E	3" E		2	3" E	3" E					
21	2	6" E	3" E		2	5" E	4" E					
22	3	6" E	4" E	3" E	3	6" E	4" E	3" E				
23	3	6" E	5" E	3" E	3	11" E	7" E	5" E				
24	1	5" E			1	5" E						
25	1	2" E			1	3" E						
26	2	3" E	3" E		2	2" F	2" E					
27	2	5" E	3" E		2	7" E	3" E					
28	1	6" E			1	9" E						
29	2	8" E	7" E		2	13" E	12" E					
30	2	7" E	6" E		2	4" G	4" G	gopher				
31	3	6" E	5" E	3" E	3	6" E	5" E	3" E				
32	3	6" E	6" E	5" E	3	9" E	7" E	7" E				
33	2	5" E	4" E		2	4" G	4" G					

34	2	6" E	6" E			2	5" G	5" G				
35	2	5" G	3" G			2	4" F	2" F				
36	3	3" E	2" E	2" E		2	3" G	3" G				
37	2	8" E	3" E			2	6" G	4" G				
38	1	5" E				1	3" E					
39	1	8" E				1	8" E					
40	3	6" E	3" E	3" E		3	5" F	3" F	3" F			
41	1	8" E				1	5" E					
42	1	6" E				1	7" E					
43	2	4" E	4" E			2	3" G	3" F				
44	2	6" E	4" E			2	5" E	5" E				
45	1	8" E				1	9" E					
46	1	5" E				1	4" G					
47	1	9" E				1	20" E					
48	3	3" E	5" E	6" E		3	5" E	3" E	2" E			
49	2	4" E	5" E			2	6" E	5" E				
50	1	7" E				1	7" E					
51	1	3" E				1	2" E					
52	2	6" E	6" E			2	6" G	5" G				
53	2	1" E	5" E			2	4" G	4" G				
54	1	5" E				1	4" E					
55	2	5" E	4" E			2	5" E	4" E				
56	1	2" E				1	5" E					
57	1	3" E				1	4" E					
58	1	7" G+				1	5" F					
59	3	4" E	3" E	3" G		3	4" F	3" G	3" G			
60	0					0						
61	3	4" E	3" E	1" G		3	3" E	2" E				
62	2	7" E	3" E			2	7" E	2" E				
63	3	6" E	5" E	3" E		3	6" E	5" E	3" E			
64	2	4" E	4" E			2	4" G	4" F				
65	3	8" E	6" E	5" E		3	7" G	5" F	4" F			
66	3	6" E	6" E	5" E		3	4" F	4" F	3" F			
67	2	6" E	4" E			2	5" E	2" E				
68	0					0						
69	3	6" E	4" E	4" E		3	6" E	5" E	4" E			
70	2	5" E	4" E			2	15" E	4" E				
71	2	4" E	4" E			2	3" E	3" E				
72	3	4" E	4" E	2" G		3	7" E	6" E	2" E			
73	2	5" E	3" E			2	15" E	5" E				
74	1	8" E				1	7" G					
75	2	5" E	3" E			2	7" E	4" E				

76	3	8"	8" E	6" E		3	14" E	12" E	8" E			
77	3	6" E	5" E	2" E		2	7" E	5" E				
78	2	2" E	3" E			2	3" E	2" E				
79	2	7" E	3" E			1	1 dead	3" E				
80	3	8" E	8" E	8" E		3	12" E	9" E	6" E			
81	2	6" E	3" G			2	12" E	3" E				
82	4	5", 6"	E 3" E	2" G		4	5", 3"	3", 2"	All E			
83	3	9" E	8" E	6" E		3	15" E	11" E	6" E			
84	3	7" E	6" E	6" E		3	8" G	6" G	5" G			
85	3	10" E	9" E	7" E		3	17" E	15" E	7" E			
86	1	1" G				0						
87	3	6" E	5" E	3" E		3	6" E	6" E	4" E			
88	2	4" E	4" E			2	3" E	3" E				
89	0					0						
90	2	5" E	3" E			2	5" E	3" E				
91	2	5" E	1" G			1	5" G					
92	3	10" E	7" E	4" E		3	10" E	7" E	3" E			
93	1	4" E				1	4" E					
94	2	6" E	3" E			2	3" G	2" G				
95	1	7" E				1	6" E					
96	3	7" E	6" E	2" E		3	5" E	5" E	2" E			
97	1	4" E				1	3" G					
98	?					1	3" G					
99	2	3" E	6" E			2	7" E	1" E				
100	2	2" E	5" E			2	4" E	2" E				

Oak Tree Project Results

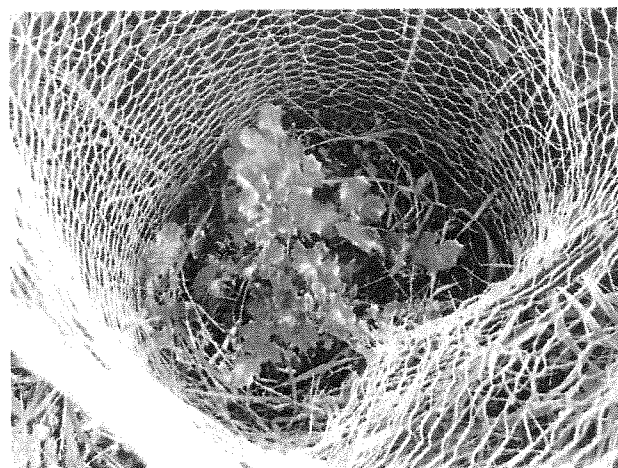
The previous tables show the cumulative results from two measuring and monitoring events conducted in August and December of the first project year. 0 to 3, and sometimes 4 trees may be present in each of the cages tagged #1 through #100 at this project site. Each tree was monitored for health and condition using a simple rating of "E" (excellent), "G" (good), and "F" (fair). A seedling represented with an "E" would show excellent health, green leaves, free of disease or blight and be prosperous in new growth. A seedling bearing a "G" rating may have slight yellowing (chlorotic), minor pest exposure or exhibit minimal signs of stress with less prosperity than an excellent tree. A seedling with an "F" rating may be lacking new growth, suffering from pest or disease exposures, or in decline.

The Survey in August yielded only one tree to be found in "Fair" condition, but in December, #18 young seedlings were found in "Fair" condition. The abundant rains that were experienced in Fall and through December in this area created a chlorotic condition in many of the young seedlings, causing a yellowing of the leaves as the excessive rainfall and lack of warm sunshine leached much of the surface nitrogen from the tree roots. As the season

passes, and maintenance mulching continues, many of these tiny trees should recover from these exposures and recover to “Excellent” condition.



The photo above shows three young seedlings within cage enclosure. The two small trees at the top of the picture would receive a health monitoring of “F” due to the yellowing and discoloring of the leaves. Below: “E”, excellent trees. (Dec)



Five cages have no trees at this time, resulting in a 95% success of cage tree sprout and survival at the end of the first year. (*Late season planting conducted in March, 2010 near the end of the rainy season) The tallest tree is 20 inches, the second tallest at 17 inches, and three trees are 15 inches at the time of this report. Twelve cages contain trees that are taller than 12 inches, thirty-five cages have trees that are between 6 inches and 12 inches, forty-three cages have trees that are between 3 inches and 6 inches, and five cages have trees that are less than three inches.



The photo above is the largest seedling tree within the project area by December 2010, 20 inches

The seed Oak tree project at Lauro Reservoir related to the Lauro Retention Basin Enlargement Project shows excellent results at the end of calendar year 2011 with #95 tree cages possessing trees at this time. The trees are very small and remain very vulnerable to changing conditions, gophers, pests and predation. Protective enclosures and regular maintenance have proved invaluable to the present success of this program to this point. Future prosperity and success of this effort will be supported by regular maintenance, weeding, supportive irrigation, and continued Oak fodder fertilization to work toward the performance criteria of #80, 6 foot tall, self sufficient Coast Live Oak trees.

Santa Barbara Honeysuckle Replacement Project at Lauro Retention Basin

Santa Barbara Honeysuckle replacement requirements are detailed in Section 3.1 of the Resource Compensation section of the SAIC Plan which requires a planting of fifty, one-gallon size honeysuckle plants. These plants were grown from seed collected within the watershed area by Growing Solutions of Santa Barbara. Melinda Fournier recommended to Ms. Susannah Pitman of COMB to increase the immediate planting numbers of Santa Barbara Honeysuckle, as available, thus allowing for potential losses over time and to support the success of a fifty plant survivorship in three years, as required in this mitigation.

(photo) CA Honeysuckle plants delivered by Growing Solutions, 3/20/10, #63 1gallon size



The photo above shows the completed installation site of the CA Honeysuckle Project related to the Lauro Retention Basin Enlargement Project, 3/21/10. All #63 available propagules related to this project were planted along the south shore of the basin, on the west-facing slope, below the canopy of the existing Oak Woodland. This area was the direct site of loss incurred during the construction project.



The photo above shows the plant community layout during the installation of the SB Honeysuckle under the canopy of the Oaks. After a complete weed clearing effort within all planting areas, each planting site was dug out by hand, to holes approximately 5 gallon size, lined with gopher protection wire mesh, planted in non-amended native soils, and constructed with a water basin berm approximately 3' in diameter. All plants were then mulched with approximately 2" of Oak fodder mulch and watered immediately after planting.

The SB Honeysuckle project was maintained parallel to the efforts of the Oak tree replacement program at Lauro Reservoir during the dry months of 2010, through December. Water was delivered to the planted shrubs by water truck and pumped by hose to individual plants which were soaked to fill the water basin and saturate all root zones. Watering was delivered weekly, and regular maintenance included poison Oak control, weeding, basin maintenance, and gopher damage control. The plants delivered from Growing Solutions in March were very small, but constant irrigation and attention resulted in tremendous success of this effort at the end of 2010.



Inspection at the end of December 2010 concluded that two SB Honeysuckle plants had died during the year (#11 and #51), yielding a 96.8% success with #61 large, healthy Honeysuckle shrubs existing at this site through project efforts.

Future work will include irrigation services, weeding, gopher control, monitoring and support for the guarantee of #50 healthy, prosperous survivors at the end of the three year responsibility period.



Operations Report – March 2011

The average flow from Lake Cachuma into the Tecolote Tunnel for March was 50 acre-feet per day. Lake elevation was 748.49 feet at the beginning of the month and 752.99 feet at the end. 0 acre-feet of State Water Project water was wheeled through Cachuma Project facilities and delivered to South Coast Member Units during the month.

The Ortega Reservoir remains out of service, with the latest toe drain reading of 5.3 GPM taken on April 13, 2011, a gradually decreasing trend since the reservoir was taken out of service. The Bureau has requested that COMB continue to monitor drain flow, piezometer elevations and site conditions for comparative information.

Other activities conducted this month include:

- COMB continues to receive inquires concerning easement and pipeline locations on or near properties. Land Use Authorization requests have dropped off last month.
- Summers Engineering has completed the draft report for the 2010 Watershed Sanitary Survey Update. Comment period closed and final document circulated in April.
- Staff and Electrician repaired high a voltage line at North Portal structure. The original conduit was compromised over the years and needed to be upgraded to today's electrical standards. New conductors were pulled from the breaker panel to the end of the walkway. A new GFI breaker to be installed in line.
- Confined space training was held on March 15th in anticipation of pipe inspections
- Lauro Debris basin continues to be pumped out to dry out the bed for future silt removals (three inch pump malfunctioned and un-repairable, seeking quotes for new four inch and new three inch pumps)
- COMB purchased a new heavy duty trailer to haul the pozzi track and other equipment to sites (i.e. to Ortega Reservoir)
- Staff continues to work on the Modified Upper Reach Project
- Met onsite with Melinda Fournier to review contract and scope of future work
- Met with County Flood Control concerning an issue adjacent to the access road up to Carpinteria Reservoir
- Attended CIP meeting at Cater Treatment Plant (mutual radio channel discussed)
- Reviewed third reliability study with Carpinteria Engineer
- Lauro Dam Community meeting held March 16th
- Staff monitoring Cachuma Spill, contacting Bureau periodically

Routine operation and maintenance activities conducted during the month included:

- Sampled water at the North Portal Intake Tower
- Fish screens were pulled and cleaned (a lot of silty debris noted on screens)
- Monitored conduit right-of-way and responded to Dig Alert reports
- Read piezometers and underdrains at Glen Anne, Lauro, Ortega and Carpinteria Dams
- Read meters, conducted monthly dam inspections, and flushed venturi meters

CACHUMA OPERATION AND MAINTENANCE BOARD
WATER STORAGE REPORT

MONTH: **March 2011**

GLEN ANNIE RESERVOIR

Capacity at 385' elevation:	518 Acre Feet
Capacity at sill of intake at 334' elevation:	21 Acre Feet
Stage of Reservoir Elevation	359.30 Feet
Water in Storage	189.26 Acre Feet

LAURO RESERVOIR

Capacity at 549' elevation:	600 Acre Feet
Capacity at sill of intake at 512' elevation:	84.39 Acre Feet
Stage of Reservoir Elevation	546.60 Feet
Water in Storage	541.71 Acre Feet

ORTEGA RESERVOIR

Capacity at 460' elevation:	65 Acre Feet
Capacity at outlet at elevation 440':	0 Acre Feet
Stage of Reservoir Elevation	440.00 Feet
Water in Storage	0.00 Acre Feet

OUT OF SERVICE

CARPINTERIA RESERVOIR

Capacity at 384' elevation:	45 Acre Feet
Capacity at outlet elevation 362':	0 Acre Feet
Stage of Reservoir Elevation	375.80 Feet
Water in Storage	25.25 Acre Feet

TOTAL STORAGE IN RESERVOIRS

Change in Storage	566.96 Acre Feet
	-10.38 Acre Feet

CACHUMA RESERVOIR*

Capacity at 750' elevation:	186,636 Acre Feet
Capacity at sill of tunnel 660' elevation:	25,668 Acre Feet

Stage of Reservoir Elevation	752.99 Feet
Water in Storage	195,548 AF
Area	3,061
Evaporation	667.9 AF
Inflow	78,841 AF
Downstream Release WR8918	0 AF
Fish Release	414.1 AF
Spill/Seismic Release	65,383 AF
State Project Water	0 AF
Change in Storage	13,778 AF
Tecolote Diversion	1,547.3 AF

Rainfall: Month: 11.85 Season: 30.19 Percent of Normal: 161%

* New capacity table adopted Dec. 2008 as a result of the Bathymetric Study completed in Sept. 2008, resulted in 1110 AF reduction of storage.

ITEM # 11a
PAGE 1

CACHUMA DAILY OPERATIONS

Graph

Month & Year: March 2011
 Time of Observations: 0830

Evaporation Pan Factor: 76%

Day	Beginning Storage:		Surface Area acres	Rainfall inches	Rainfall acre-feet	Evap. inches	Evap. acre-feet	CCWA Inflow acre-feet	Releases					Computed Inflow acre-feet		
	Elevation ft	Change acre-feet							S. Coast acre-feet	Hilton acre-feet	WR8918 acre-feet	Outlet acre-feet	Spillway acre-feet			
1	748.49	182234	464	2901		0.096	17.6								553.0	
2	748.67	182756	522	2905	0.03	7.3	1.7								563.3	
3	748.85	183279	522	2909	0.27	65.4	21.6								524.4	
4	749.07	183919	640	2913	0.01	2.4	13.8								698.7	
5	749.25	184445	526	2917			23.1								607.3	
6	749.39	184854	409	2920			23.5								495.3	
7	749.52	185233	380	2923	0.02	4.9	0.9								429.6	
8	749.67	185672	438	2926			32.4								529.1	
9	749.77	185964	292	2928			27.8								379.3	
10	749.86	186227	263	2930			30.8								354.0	
11	749.94	186461	234	2932			25.3								329.6	
12	750.03	186724	264	2934			16.9								358.0	
13	750.10	186930	206	2935			20.6								304.6	
14	750.17	187136	206	2937			24.6								315.6	
15	750.22	187284	147	2938			22.3								253.4	
16	750.28	187460	177	2939			29.0								290.3	
17	750.35	187666	206	2941			30.2								312.0	
18	750.39	187784	118	2942			36.3								216.2	
19	750.46	187990	206	2943	0.13	31.9	22.2								247.2	
20	751.48	191007	3016	2971	7.30	1807.6	18.8								1277.0	
21	752.60	194368	3361	3033	3.36	849.2	19.2								31065.3	
22	751.93	192344	-2024	2987	0.02	5.0	12.9								9035.4	
23	751.47	190977	-1367	2971	0.04	9.9	21.3								4732.4	
24	751.48	191007	30	2971	0.39	96.6	5.8								3517.3	
25	751.69	191631	624	2978	0.25	62.1	4.5								2838.0	
26	751.80	191958	327	2982			31.5								3459.8	
27	751.77	191868	-89	2981	0.03	7.5	4.7								4888.4	
28	752.06	192734	865	2993			31.3								3493.0	
29	752.55	194216	1483	3029			27.6								1778.0	
30	752.96	195457	1241	3059			39.7								791.0	
31	752.99	195548	91	3061			29.9								905.0	
TOTALS					11.85	2949.6	3.563	667.9	0.0	0.0	0.0	1.547.3	414.1	0.0	65,383.0	78,840.8

Park Usage 3.83 Rain % 161% Yr. Total 30.19 March 13 23 hour day

ITEM # 11a
 PAGE 2

UNITED STATES DEPARTMENT OF THE INTERIOR
 U.S. BUREAU OF RECLAMATION-CACHUMA PROJECT-CALIFORNIA

APRIL 2011

LAKE CACHUMA DAILY OPERATIONS

RUN DATE: April 20, 2011

DAY	ELEV	STORAGE		COMPUTED* INFLOW AF.	CCWA INFLOW AF.	PRECIP ON RES. SURF. AF.	RELEASE - AF.				EVAP AF.	PRECIP INCHES	
		ACRE-FEET IN LAKE	CHANGE				TUNNEL	HILTON CREEK	OUTLET	SPILLWAY			
1	752.99	195,548											
1	752.95	195,427	-121	2,241.5	0.0	.0	62.0	26.8	.0	2,224.0	49.7	.244	.00
2	752.92	195,336	-91	1,966.2	0.0	.0	63.6	26.9	.0	1,919.0	47.7	.234	.00
3	752.91	195,306	-30	1,633.6	0.0	.0	68.5	26.9	.0	1,545.0	23.2	.114	.00
4	752.92	195,336	+30	1,348.3	0.0	.0	66.9	27.0	.0	1,201.0	23.4	.115	.00
5	752.94	195,396	+60	1,243.5	0.0	.0	69.7	27.1	.0	1,049.0	37.7	.185	.00
6	752.94	195,396	+0	1,120.2	0.0	.0	81.1	27.1	.0	969.0	43.0	.211	.00
7	752.93	195,366	-30	1,028.1	0.0	.0	81.1	27.1	.0	912.0	37.9	.186	.00
8	752.94	195,396	+30	893.9	0.0	12.7	74.9	27.2	.0	771.0	3.5	.017	.05
9	752.96	195,457	+61	847.5	0.0	7.6	71.5	27.2	.0	687.0	8.4	.041	.03
10	752.95	195,427	-30	791.8	0.0	.0	72.8	27.3	.0	686.0	35.7	.175	.00
11	752.95	195,427	+0	766.8	0.0	.0	82.5	27.2	.0	622.0	35.1	.172	.00
12	752.94	195,396	-31	692.1	0.0	.0	86.9	27.3	.0	571.0	37.9	.186	.00
13	752.93	195,366	-30	593.2	0.0	.0	94.9	27.2	.0	461.0	40.1	.197	.00
14	752.95	195,427	+61	589.4	0.0	.0	97.3	27.4	333.0	32.0	38.7	.190	.00
15	752.98	195,517	+90	609.0	0.0	.0	97.3	27.2	351.0	.0	43.5	.213	.00
16	752.95	195,427	-90	580.6	0.0	.0	114.8	27.2	476.0	.0	52.6	.258	.00
17	752.91	195,306	-121	559.3	0.0	.0	122.5	27.2	478.0	.0	52.6	.258	.00
18	752.90	195,275	-31	549.9	0.0	.0	104.6	27.3	406.0	.0	43.0	.211	.00
19	752.89	195,245	-30	519.8	0.0	.0	111.7	27.3	366.0	.0	44.8	.220	.00
20	752.89	195,245	+0	451.2	0.0	.0	88.4	27.3	305.0	.0	30.5	.150	.00
TOTAL (AF)			-303	19,025.9	0.0	20.3	1,713.0	543.2	2,715.0	13,649.0	729.0	3.577	.08
(AVG)		195,374											

COMMENTS:

* COMPUTED INFLOW IS THE SUM OF CHANGE IN STORAGE, RELEASES, AND EVAPORATION MINUS PRECIP ON THE RESERVOIR SURFACE AND CCWA INFLOW.

DATA BASED ON 24-HOUR PERIOD ENDING 0800.

INDICATED OUTLETS RELEASE INCLUDE ANY LEAKAGE AROUND GATES.

ITEM # 116
 PAGE 1



THE ASSOCIATION OF WATER AGENCIES OF VENTURA COUNTY

Proudly Presents

The 19th Annual Water Symposium

In Partnership with

Calleguas Municipal Water District

Houweling Nurseries Oxnard Inc.

Metropolitan Water District of
Southern California

and

United Water Conservation District



“ON THE ROAD TO UTOPIA ... VENTURA COUNTY’S JOURNEY TO WATER SUSTAINABILITY”

THURSDAY, APRIL 21, 2011

7:00 am—1:30 pm

Courtyard By Marriott
Oxnard, California



Earn 2.5 CDPH Contact Hours
Registration Form Below
or online www.awavc.org

ITEM # 11d
PAGE 1

Program Outline

7:00 AM REGISTRATION / AGENCY & VENDOR EXHIBITION / CONTINENTAL BREAKFAST

8:00 AM General Welcome

"2011 AWA PRESIDENT"

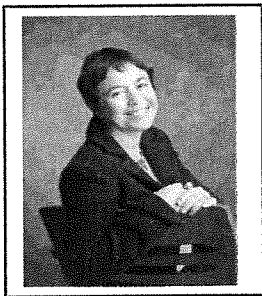
Al Yañez - California American Water Company

"2011 AWA SYMPOSIUM CHAIRPERSON"

Stacy Roscoe, AWA Past President/Water Issues Co-Chair

Opening Speaker

"Truth or Dare ... Dispelling Myths to Best Manage California's Water: From Conflict to Reconciliation"



ELLEN HANAK, Senior Fellow, Public Policy Institute of California

Moving Beyond Myth in California Water...Faced with so many challenges, California needs to base its water policy decisions on an accurate understanding of the State's water problems. Unfortunately, myths about California's water hinder the development of effective policies to manage this important resource. Be among the first to learn of the latest studies that led to her new book which outlines an ambitious reform agenda to help put California water management on a more constructive and hopeful path.

See it on PPIC website at www.ppic.org/main/publication.asp?i=944

Audience will have opportunity to interact with wireless clicker response technology!

PANEL SESSION ONE

"The 'Big Bucks' Theory...When Science, Economics and the Water Industry Collide"

Different stakeholders have different visions. If you locked a water purveyor, a regulator, and an economist in the same room, could they come up with a local water supply solution? What would it look like? What would the price of water be? How would you convey this info to the customer?

STACY ROSCOE—Panel Moderator

LYNN TAKAICHI, Vice President, Kennedy/Jenks Consultants

Basic economics of the supply/demand curve: If the price goes up how do customers such as ag and other businesses stay in business here in the County? How does a purveyor pay for infrastructure cost, especially in light of Prop 218? How can systems maintenance be covered? What are the total impacts of regulations, environmental controls, and conservation?

SAMUEL UNGER, PE - Executive Officer, California Regional Water Quality Control Board-Los Angeles

What are the driving forces behind regulation? To what degree is cost taken into consideration? How do regulatory agencies interface with each other as they manage their individual agency responsibilities? Do regulators feel more pressure to worry about water supply as the current water situation evolves? How do good regulators listen to water supplier needs and communicate back to the regulating agency boards?

DAVID L. SUNDING - Visiting Professor UC Berkeley

Existing ratepayers reject paying more for less, and new development fees are drying up. What is the future role of cost subsidies to various water users? Purveyor water sales are down due to cutbacks and voters are rejecting bonds and tax increases at the same time that costs are rising due to infrastructure needs, regulations and environmental demands. How do we get away from the old ways of doing business and get to more innovative approaches? Will cost drive us to more recycle, ocean desalination, and storm water capture and use. How do we pay for it all ...How do we find harmony?

ITEM # 11d

PAGE 2

Panel Session Two

“In Search of Harmony”

How do we balance our Ventura County environmental, quality, and quantity needs?

JOE GIBSON—Panel Moderator, Associate Principal, Impact Sciences, Inc.

GREGORY K. WILKINSON, Attorney and Partner at Best Best & Krieger

Background on the Delta litigation and the most recent events. What are the implications to our local (southern California) water agencies of recent court decisions regarding Biological Opinions for the salmon and delta smelt? What are the impacts to water supply to the SWP that have occurred in the past few years and future forecast? Given the requirements of the recent Comprehensive Water Legislation, what are the additional needs for water conservation and can we really achieve a 20% reduction?

ROBERT C. WILKINSON, Ph.D., Adjunct Associate Professor, Bren School of Environmental Science and Management at UCSB

Given the requirements of the recent Comprehensive Water Legislation in 2009, what are the additional needs for water conservation and can we really achieve a 20% reduction? What future environmental constraints do you foresee that will need to be dealt with regards to water supplies and deliveries? How does the policy of “co-equal” goals for balancing the obligation to safeguard species with the need to avoid detrimental impacts on local communities and economies work in your opinion, and at what time does one trump the other?

MIKE WADE, General Manager – California Farm Water Coalition

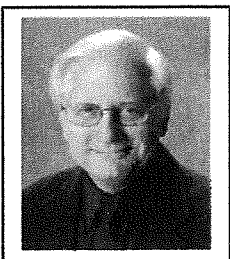
Given the requirements of the recent Comprehensive Water Legislation in 2009, what additionally can ag users do to conserve water? What are the constraints and issues associated with using recycled/reclaimed water for ag and where have these been overcome? What future environmental constraints do you foresee that will need to be dealt with regards to water supplies and deliveries? What barriers, including regulatory issues and chloride, need to be addressed to assure continued agricultural production?

11:30 AM BREAK / AGENCY & VENDOR EXHIBITION

12:00 PM LUNCHEON / INTRODUCTIONS / AWARDS

1:00 PM Keynote Speaker

“Is Water Running Out of Political Steam?”



GERALD E. “JERRY” JOHNS, Retired Deputy Director of the Department of Water Resources under Governor Arnold Schwarzenegger.

An insider's look at what may be in store from the Brown administration, and a perspective of where they are and where they need to be to make complex water issues come together.

1:30 PM Adjourn

ITEM # 11d
PAGE 3

Conference Reservation Information

Fax this form to (805) 644-0435 or

Mail with payment to 5156 McGrath Street, Suite 104, Ventura, CA 93003 or register ONLINE at www.awavc.org

Organization _____

Address _____

City _____ State _____ Zip _____ Email _____

Phone _____ Fax _____

Please advise if you would like a vegetarian meal, or have any special dietary needs.

Name 1 _____ No lunch *

Title _____ Vegetarian meal

Name 2 _____ No lunch *

Title _____ Vegetarian meal

Name 3 _____ No lunch *

Title _____ Vegetarian meal

Name 4 _____ No lunch *

Title _____ Vegetarian meal

Please list additional registrations on a separate sheet and attach

** Unable to stay for lunch portion of conference (no discount for this option)*

Event Date: Thursday, April 21, 2011

Early Registration DEADLINE (by Friday, April 15, 2011)

AWA Member \$150

Non-Member \$175

Registration after Friday, April 15, 2011

AWA Member \$170

Non-Member \$195

Reserved Tables of 8-Early Registration \$1200

Space is limited -- please contact AWA for availability.

Note: There will be a \$10 surcharge for walk-ins without reservations

Refund Policy: Requests must be submitted in writing no later than

Friday, April 15, 2011. Refund requests will not be accepted after this date.

Method of Payment:

- Enclosed is a check payable to AWA in the amount of \$_____
- Payment will be mailed before April 15th
- Credit card payment will be made online prior to event (www.awavc.org)
- Payment will be made at the event on April 21st
Cash or Check only -- we do NOT accept credit cards at the event.

ITEM # 116

PAGE 4

**THE 19TH ANNUAL WATER SYMPOSIUM
IS PROUDLY BROUGHT TO YOU BY...**

CHAMPIONS

Calleguas Municipal Water District

Houweling Nurseries Oxnard Inc.

**Metropolitan Water District of
Southern California**

United Water Conservation District



PATRONS

AECOM

Camrosa Water District

Carollo Engineers

Casitas Municipal Water District

City of Oxnard — Water Resources Division

City of Ventura—Public Works

Farm Bureau of Ventura County

Hopkins Groundwater Consultants

Impact Sciences

Kennedy/Jenks Consultants

P&G Paper Products

Southern California Edison

SPONSORS

Arnold Bleuel La Rochelle Mathews & Zirbel LLP
Best Best & Krieger LLP
Black & Veatch
Blois Construction, Inc.
California American Water
California Lutheran University
Castaic Lake Water Agency
CH2M HILL
City of Thousand Oaks
Cardno ENTRIX
Fugro West, Inc
Golden State Water Company
Koppl Pipeline Services/American Hot Taps
Larry Walker Associates
Las Virgenes Municipal Water District
Limoneira Company
Lowthorp, Richards, McMillan, Miller & Templeman
Nordman Cormany Hair & Compton LLP
Perliter & Ingalsbe
Port Hueneme Water Agency
Santa Barbara Bank & Trust
Somis Group, Inc.

“Thank You”

2011 Water Symposium Planning Group

Stacy Roscoe—Symposium Committee Chair
Julia Aranda—Kennedy/Jenks Consultants
Ken Breitag—United Water Conservation District
Ryan Gallagher—AECOM
Joe Gibson—Impact Sciences, Inc.
Henry Graumlich—Calleguas Municipal Water District
William Hair—Nordman Cormany Hair & Compton, LLP
Jacque McMillan—Metropolitan Water District
Ron Merckling—Casitas Municipal Water District
Kelle Pistone—AWA Managing Director